



PERFECT™  
**SILK**  
LASHES  
BY ANETE STEINA

THE POWER  
OF SEDUCTION

# Perfect Silk Lashes

---

## PRODUCTION CATALOGUE

### EYELASHES & EYEBROWS



▶ page 3

### SWAROVSKY ELEMENTS™



▶ page 31

### COSMETIC AND SPECIFIC PRODUCTS



▶ page 33

### ACCESSORIES & TOOLS



▶ page 49

### AFTER CARE



▶ page 70

### PERMANENT, LIFT & LAMINATIONS



▶ page 77

### PROFESSIONAL & START KITS



▶ page 89





PERFECT™  
**SILK**  
LASHES  
BY ANETE STEINA

## EYELASHES & EYEBROWS

# Perfect Silk Lashes

## GENERAL INFORMATION FOR PSL™ EYELASHES

Three main parameters for artificial eyelashes

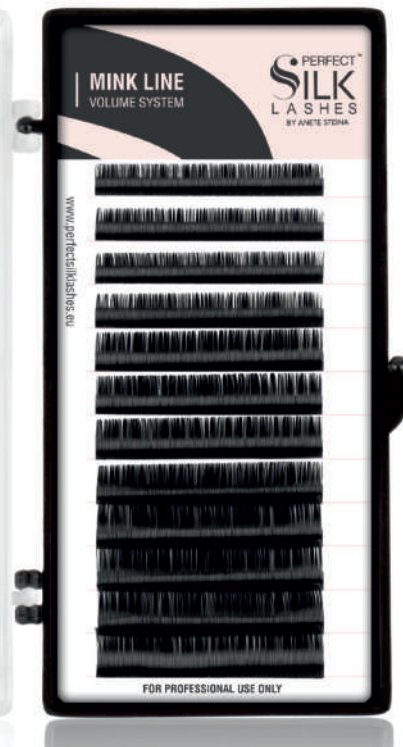
### CURL



### THICKNESS



### LENGTH



# Perfect Silk Lashes

## GENERAL INFORMATION FOR PSL™ EYELASHES

### *Additional parameters for artificial eyelashes*

#### SHAPES



Y-type

Double bunch for extension –  
to give the density to eyelashes



W-type

Triple bunch for extension –  
to increase the volume of eyelashes

#### COLOR



Black



Blue



Brown



Golden



Green



Pink



Red



Violet

#### LINES

**MINK  
LINE**

**PREMIUM  
PLUS LINE**

**INDIVIDUAL  
LINE**

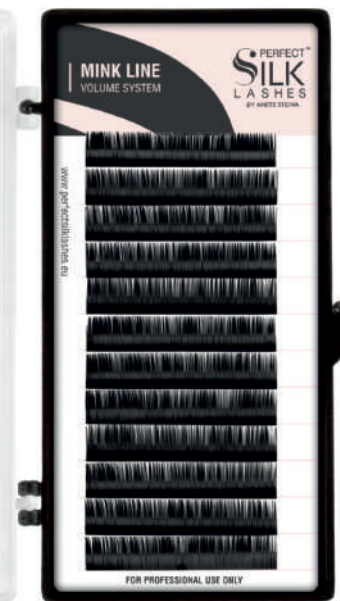
**STRIP  
LINE**

# Perfect Silk Lashes

## PSL™ MINK LINE

Perfect Silk Lashes™ - Mink Line lash extensions are specially designed for One by One and Volume System treatments. The packaging is extremely userfriendly. Eyelashes extension can be easily removed from the packaging and are ready-to-wear. Super soft, flexible and

lightweight lashes made from synthetic silk fiber, PSL™ Mink Line lashes are practically identical to natural lashes - thicker at the bottom and thin at the end. Available in different sizes, colours and shapes, PSL™ Mink Line false lashes allow you to completely customize the look.



EXTENSION TECHNIQUE:	CURL:	THICKNESS:	LENGTH:	SHAPES:	COLOR:
ONE BY ONE	J-curl	0.03 mm	6 mm - 14 mm	Y-type W-type	Black
VOLUME	B-curl	0.05 mm			TT - Two Tone
	C-curl	0.07 mm			FC - Fancy Color
	D-curl	0.10 mm			GL - Glitter lashes
	LC-curl	0.15 mm			
	LD-curl	0.20 mm			
		0.25 mm			

# Perfect Silk Lashes

## PSL™ MINK LINE

### Mink Line J-curl, thickness 0.20



- PSL1820J81012 PSL Mink Lashes J.20 Black 8/10/12 mm
- PSL1820J91113 PSL Mink Lashes J.20 Black 9/11/13 mm
- PSL1820J06 PSL Mink Lashes J.20 Black 6 mm
- PSL1820J07 PSL Mink Lashes J.20 Black 7 mm
- PSL1820J08 PSL Mink Lashes J.20 Black 8 mm
- PSL1820J09 PSL Mink Lashes J.20 Black 9 mm
- PSL1820J10 PSL Mink Lashes J.20 Black 10 mm
- PSL1820J11 PSL Mink Lashes J.20 Black 11 mm
- PSL1820J12 PSL Mink Lashes J.20 Black 12 mm
- PSL1820J13 PSL Mink Lashes J.20 Black 13 mm
- PSL1820J14 PSL Mink Lashes J.20 Black 14 mm



### Mink Line B-curl, thickness 0.05



- PSL1805B81012 PSL Mink Lashes B.05 Black 8/10/12 mm
- PSL1805B91113 PSL Mink Lashes B.05 Black 9/11/13 mm
- PSL1805B8811X PSL Mink Lashes B.05 Black 8+8+11 mm  
*Perfect Chaos™*
- PSL1805B9912X PSL Mink Lashes B.05 Black 9+9+12 mm  
*Perfect Chaos™*
- PSL1805B08 PSL Mink Lashes B.05 Black 8 mm
- PSL1805B09 PSL Mink Lashes B.05 Black 9 mm
- PSL1805B10 PSL Mink Lashes B.05 Black 10 mm
- PSL1805B11 PSL Mink Lashes B.05 Black 11 mm
- PSL1805B12 PSL Mink Lashes B.05 Black 12 mm
- PSL1805B13 PSL Mink Lashes B.05 Black 13 mm
- PSL1805B14 PSL Mink Lashes B.05 Black 14 mm





# Perfect Silk Lashes

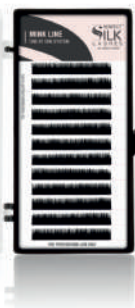
## PSL™ MINK LINE

### Mink Line B-curl, thickness 0.20



- PSL1820B81012 PSL Mink Lashes B.20 Black 8/10/12 mm
- PSL1820B91113 PSL Mink Lashes B.20 Black 9/11/13 mm
- PSL1820B06 PSL Mink Lashes B.20 Black 6 mm
- PSL1820B07 PSL Mink Lashes B.20 Black 7 mm
- PSL1820B08 PSL Mink Lashes B.20 Black 8 mm
- PSL1820B09 PSL Mink Lashes B.20 Black 9 mm
- PSL1820B10 PSL Mink Lashes B.20 Black 10 mm
- PSL1820B11 PSL Mink Lashes B.20 Black 11 mm
- PSL1820B12 PSL Mink Lashes B.20 Black 12 mm
- PSL1820B13 PSL Mink Lashes B.20 Black 13 mm
- PSL1820B14 PSL Mink Lashes B.20 Black 14 mm

12 lines  
each size



### Mink Line B-curl, thickness 0.25



- PSL1825B81012 PSL Mink Lashes B.25 Black 8/10/12 mm
- PSL1825B91113 PSL Mink Lashes B.25 Black 9/11/13 mm
- PSL1825B06 PSL Mink Lashes B.25 Black 6 mm
- PSL1825B07 PSL Mink Lashes B.25 Black 7 mm
- PSL1825B08 PSL Mink Lashes B.25 Black 8 mm
- PSL1825B09 PSL Mink Lashes B.25 Black 9 mm
- PSL1825B10 PSL Mink Lashes B.25 Black 10 mm
- PSL1825B11 PSL Mink Lashes B.25 Black 11 mm
- PSL1825B12 PSL Mink Lashes B.25 Black 12 mm
- PSL1825B13 PSL Mink Lashes B.25 Black 13 mm
- PSL1825B14 PSL Mink Lashes B.25 Black 14 mm

# Perfect Silk Lashes

## PSL™ MINK LINE



### Mink Line C-curl, thickness 0.03

- PSL1803C81012 PSL Mink Lashes C.03 Black 8/10/12 mm
- PSL1803C91113 PSL Mink Lashes C.03 Black 9/11/13 mm
- PSL1803C08 PSL Mink Lashes C.03 Black 8 mm
- PSL1803C09 PSL Mink Lashes C.03 Black 9 mm
- PSL1803C10 PSL Mink Lashes C.03 Black 10 mm
- PSL1803C11 PSL Mink Lashes C.03 Black 11 mm
- PSL1803C12 PSL Mink Lashes C.03 Black 12 mm
- PSL1803C13 PSL Mink Lashes C.03 Black 13 mm
- PSL1803C14 PSL Mink Lashes C.03 Black 14 mm



### Mink Line C-curl, thickness 0.05

- PSL1805C81012 PSL Mink Lashes C.05 Black 8/10/12 mm
- PSL1805C91113 PSL Mink Lashes C.05 Black 9/11/13 mm
- PSL1805C8811X PSL Mink Lashes C.05 Black 8+8+11 mm  
*Perfect Chaos™*
- PSL1805C9912X PSL Mink Lashes C.05 Black 9+9+12 mm  
*Perfect Chaos™*
- PSL1805C08 PSL Mink Lashes C.05 Black 8 mm
- PSL1805C09 PSL Mink Lashes C.05 Black 9 mm
- PSL1805C10 PSL Mink Lashes C.05 Black 10 mm
- PSL1805C11 PSL Mink Lashes C.05 Black 11 mm
- PSL1805C12 PSL Mink Lashes C.05 Black 12 mm
- PSL1805C13 PSL Mink Lashes C.05 Black 13 mm
- PSL1805C14 PSL Mink Lashes C.05 Black 14 mm

# Perfect Silk Lashes

## PSL™ MINK LINE

### Mink Line C-curl, thickness 0.07



- PSL1807C81012 PSL Mink Lashes C.07 Black 8/10/12 mm
- PSL1807C91113 PSL Mink Lashes C.07 Black 9/11/13 mm
- PSL1807C06 PSL Mink Lashes C.07 Black 6 mm
- PSL1807C07 PSL Mink Lashes C.07 Black 7 mm
- PSL1807C08 PSL Mink Lashes C.07 Black 8 mm
- PSL1807C09 PSL Mink Lashes C.07 Black 9 mm
- PSL1807C10 PSL Mink Lashes C.07 Black 10 mm
- PSL1807C11 PSL Mink Lashes C.07 Black 11 mm
- PSL1807C12 PSL Mink Lashes C.07 Black 12 mm
- PSL1807C13 PSL Mink Lashes C.07 Black 13 mm
- PSL1807C14 PSL Mink Lashes C.07 Black 14 mm

### Mink Line C-curl, thickness 0.10



- PSL1810C81012 PSL Mink Lashes C.10 Black 8/10/12 mm
- PSL1810C91113 PSL Mink Lashes C.10 Black 9/11/13 mm
- PSL1810C06 PSL Mink Lashes C.10 Black 6 mm
- PSL1810C07 PSL Mink Lashes C.10 Black 7 mm
- PSL1810C08 PSL Mink Lashes C.10 Black 8 mm
- PSL1810C09 PSL Mink Lashes C.10 Black 9 mm
- PSL1810C10 PSL Mink Lashes C.10 Black 10 mm
- PSL1810C11 PSL Mink Lashes C.10 Black 11 mm
- PSL1810C12 PSL Mink Lashes C.10 Black 12 mm
- PSL1810C13 PSL Mink Lashes C.10 Black 13 mm
- PSL1810C14 PSL Mink Lashes C.10 Black 14 mm

# Perfect Silk Lashes

## PSL™ MINK LINE



### Mink Line C-curl, thickness 0.15

- PSL1815C81012 PSL Mink Lashes C.15 Black 8/10/12 mm
- PSL1815C91113 PSL Mink Lashes C.15 Black 9/11/13 mm
- PSL1815C06 PSL Mink Lashes C.15 Black 6 mm
- PSL1815C07 PSL Mink Lashes C.15 Black 7 mm
- PSL1815C08 PSL Mink Lashes C.15 Black 8 mm
- PSL1815C09 PSL Mink Lashes C.15 Black 9 mm
- PSL1815C10 PSL Mink Lashes C.15 Black 10 mm
- PSL1815C11 PSL Mink Lashes C.15 Black 11 mm
- PSL1815C12 PSL Mink Lashes C.15 Black 12 mm
- PSL1815C13 PSL Mink Lashes C.15 Black 13 mm
- PSL1815C14 PSL Mink Lashes C.15 Black 14 mm



### Mink Line C-curl, thickness 0.20

- PSL1820C81012 PSL Mink Lashes C.20 Black 8/10/12 mm
- PSL1820C91113 PSL Mink Lashes C.20 Black 9/11/13 mm
- PSL1820C06 PSL Mink Lashes C.20 Black 6 mm
- PSL1820C07 PSL Mink Lashes C.20 Black 7 mm
- PSL1820C08 PSL Mink Lashes C.20 Black 8 mm
- PSL1820C09 PSL Mink Lashes C.20 Black 9 mm
- PSL1820C10 PSL Mink Lashes C.20 Black 10 mm
- PSL1820C11 PSL Mink Lashes C.20 Black 11 mm
- PSL1820C12 PSL Mink Lashes C.20 Black 12 mm
- PSL1820C13 PSL Mink Lashes C.20 Black 13 mm
- PSL1820C14 PSL Mink Lashes C.20 Black 14 mm

# Perfect Silk Lashes

## PSL™ MINK LINE



### Mink Line C-curl, thickness 0.25

- PSL1825C81012 PSL Mink Lashes C.25 Black 8/10/12 mm
- PSL1825C91113 PSL Mink Lashes C.25 Black 9/11/13 mm
- PSL1825C06 PSL Mink Lashes C.25 Black 6 mm
- PSL1825C07 PSL Mink Lashes C.25 Black 7 mm
- PSL1825C08 PSL Mink Lashes C.25 Black 8 mm
- PSL1825C09 PSL Mink Lashes C.25 Black 9 mm
- PSL1825C10 PSL Mink Lashes C.25 Black 10 mm
- PSL1825C11 PSL Mink Lashes C.25 Black 11 mm
- PSL1825C12 PSL Mink Lashes C.25 Black 12 mm
- PSL1825C13 PSL Mink Lashes C.25 Black 13 mm
- PSL1825C14 PSL Mink Lashes C.25 Black 14 mm



### Mink Line D-curl, thickness 0.03

- PSL1803D81012 PSL Mink Lashes D.03 Black 8/10/12 mm
- PSL1803D91113 PSL Mink Lashes D.03 Black 9/11/13 mm
- PSL1803D08 PSL Mink Lashes D.03 Black 8 mm
- PSL1803D09 PSL Mink Lashes D.03 Black 9 mm
- PSL1803D10 PSL Mink Lashes D.03 Black 10 mm
- PSL1803D11 PSL Mink Lashes D.03 Black 11 mm
- PSL1803D12 PSL Mink Lashes D.03 Black 12 mm
- PSL1803D13 PSL Mink Lashes D.03 Black 13 mm
- PSL1803D14 PSL Mink Lashes D.03 Black 14 mm



# Perfect Silk Lashes

## PSL™ MINK LINE



### Mink Line D-curl, thickness 0.05

- PSL1805D81012 PSL Mink Lashes D.05 Black 8/10/12 mm
- PSL1805D91113 PSL Mink Lashes D.05 Black 9/11/13 mm
- PSL1805D8811X PSL Mink Lashes D.05 Black 8+8+11 mm  
*Perfect Chaos™*
- PSL1805D9912X PSL Mink Lashes D.05 Black 9+9+12 mm  
*Perfect Chaos™*
- PSL1805D08 PSL Mink Lashes D.05 Black 8 mm
- PSL1805D09 PSL Mink Lashes D.05 Black 9 mm
- PSL1805D10 PSL Mink Lashes D.05 Black 10 mm
- PSL1805D11 PSL Mink Lashes D.05 Black 11 mm
- PSL1805D12 PSL Mink Lashes D.05 Black 12 mm
- PSL1805D13 PSL Mink Lashes D.05 Black 13 mm
- PSL1805D14 PSL Mink Lashes D.05 Black 14 mm



### Mink Line D-curl, thickness 0.10

- PSL1810D81012 PSL Mink Lashes D.10 Black 8/10/12 mm
- PSL1810D91113 PSL Mink Lashes D.10 Black 9/11/13 mm
- PSL1810D06 PSL Mink Lashes D.10 Black 6 mm
- PSL1810D07 PSL Mink Lashes D.10 Black 7 mm
- PSL1810D08 PSL Mink Lashes D.10 Black 8 mm
- PSL1810D09 PSL Mink Lashes D.10 Black 9 mm
- PSL1810D10 PSL Mink Lashes D.10 Black 10 mm
- PSL1810D11 PSL Mink Lashes D.10 Black 11 mm
- PSL1810D12 PSL Mink Lashes D.10 Black 12 mm
- PSL1810D13 PSL Mink Lashes D.10 Black 13 mm
- PSL1810D14 PSL Mink Lashes D.10 Black 14 mm

# Perfect Silk Lashes

## PSL™ MINK LINE



### Mink Line D-curl, thickness 0.15

- PSL1815D81012 PSL Mink Lashes D.15 Black 8/10/12 mm
- PSL1815D91113 PSL Mink Lashes D.15 Black 9/11/13 mm
- PSL1815D06 PSL Mink Lashes D.15 Black 6 mm
- PSL1815D07 PSL Mink Lashes D.15 Black 7 mm
- PSL1815D08 PSL Mink Lashes D.15 Black 8 mm
- PSL1815D09 PSL Mink Lashes D.15 Black 9 mm
- PSL1815D10 PSL Mink Lashes D.15 Black 10 mm
- PSL1815D11 PSL Mink Lashes D.15 Black 11 mm
- PSL1815D12 PSL Mink Lashes D.15 Black 12 mm
- PSL1815D13 PSL Mink Lashes D.15 Black 13 mm
- PSL1815D14 PSL Mink Lashes D.15 Black 14 mm



### Mink Line D-curl, thickness 0.20

- PSL1820D81012 PSL Mink Lashes D.20 Black 8/10/12 mm
- PSL1820D91113 PSL Mink Lashes D.20 Black 9/11/13 mm
- PSL1820D06 PSL Mink Lashes D.20 Black 6 mm
- PSL1820D07 PSL Mink Lashes D.20 Black 7 mm
- PSL1820D08 PSL Mink Lashes D.20 Black 8 mm
- PSL1820D09 PSL Mink Lashes D.20 Black 9 mm
- PSL1820D10 PSL Mink Lashes D.20 Black 10 mm
- PSL1820D11 PSL Mink Lashes D.20 Black 11 mm
- PSL1820D12 PSL Mink Lashes D.20 Black 12 mm
- PSL1820D13 PSL Mink Lashes D.20 Black 13 mm
- PSL1820D14 PSL Mink Lashes D.20 Black 14 mm

# Perfect Silk Lashes

## PSL™ MINK LINE



### Mink Line D-curl, thickness 0.25

- PSL1825D81012 PSL Mink Lashes D.25 Black 8/10/12 mm
- PSL1825D91113 PSL Mink Lashes D.25 Black 9/11/13 mm
- PSL1825D06 PSL Mink Lashes D.25 Black 6 mm
- PSL1825D07 PSL Mink Lashes D.25 Black 7 mm
- PSL1825D08 PSL Mink Lashes D.25 Black 8 mm
- PSL1825D09 PSL Mink Lashes D.25 Black 9 mm
- PSL1825D10 PSL Mink Lashes D.25 Black 10 mm
- PSL1825D11 PSL Mink Lashes D.25 Black 11 mm
- PSL1825D12 PSL Mink Lashes D.25 Black 12 mm
- PSL1825D13 PSL Mink Lashes D.25 Black 13 mm
- PSL1825D14 PSL Mink Lashes D.25 Black 14 mm



### Mink Line LC-curl, thickness 0.07

- PSL1807LC81012 PSL Mink Lashes LC.07 Black 8/10/12 mm
- PSL1807LC91113 PSL Mink Lashes LC.07 Black 9/11/13 mm

### Mink Line LC-curl, thickness 0.15

- PSL1815LC81012 PSL Mink Lashes LC.15 Black 8/10/12 mm
- PSL1815LC91113 PSL Mink Lashes LC.15 Black 9/11/13 mm



### Mink Line LD-curl, thickness 0.07

- PSL1807LD81012 PSL Mink Lashes LC.07 Black 8/10/12 mm
- PSL1807LD91113 PSL Mink Lashes LC.07 Black 9/11/13 mm

### Mink Line LD-curl, thickness 0.15

- PSL1815LD81012 PSL Mink Lashes LC.15 Black 8/10/12 mm
- PSL1815LD91113 PSL Mink Lashes LC.15 Black 9/11/13 mm

# Perfect Silk Lashes

## PSL™ MINK LINE

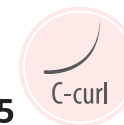
### Two Tone Color C-curl, thickness 0.15



- PSL18TT15C08 PSL Mink Lashes C.15 Two Tone Color 8 mm
- PSL18TT15C09 PSL Mink Lashes C.15 Two Tone Color 9 mm
- PSL18TT15C10 PSL Mink Lashes C.15 Two Tone Color 10 mm
- PSL18TT15C11 PSL Mink Lashes C.15 Two Tone Color 11 mm
- PSL18TT15C12 PSL Mink Lashes C.15 Two Tone Color 12 mm
- PSL18TT15C13 PSL Mink Lashes C.15 Two Tone Color 13 mm



### Fancy Color C-curl, thickness 0.15



- PSL18FC15C08 PSL Mink Lashes C.15 Fancy Color 8 mm
- PSL18FC15C09 PSL Mink Lashes C.15 Fancy Color 9 mm
- PSL18FC15C10 PSL Mink Lashes C.15 Fancy Color 10 mm
- PSL18FC15C11 PSL Mink Lashes C.15 Fancy Color 11 mm
- PSL18FC15C12 PSL Mink Lashes C.15 Fancy Color 12 mm
- PSL18FC15C13 PSL Mink Lashes C.15 Fancy Color 13 mm



# Perfect Silk Lashes

## PSL™ MINK LINE



### Y-Type J-curl, thickness 0.15

- PSL18Y15J81012 Perfect Silk Lashes Y-Type J.15 Black 8/10/12 mm
- PSL18Y15J91113 Perfect Silk Lashes Y-Type J.15 Black 9/11/13 mm
- PSL18Y15J08 Perfect Silk Lashes Y-Type J.15 Black 8 mm
- PSL18Y15J09 Perfect Silk Lashes Y-Type J.15 Black 9 mm
- PSL18Y15J10 Perfect Silk Lashes Y-Type J.15 Black 10 mm
- PSL18Y15J11 Perfect Silk Lashes Y-Type J.15 Black 11 mm
- PSL18Y15J12 Perfect Silk Lashes Y-Type J.15 Black 12 mm
- PSL18Y15J13 Perfect Silk Lashes Y-Type J.15 Black 13 mm



### W-Type J-curl, thickness 0.15

- PSL18W15J81012 Perfect Silk Lashes W-Type J.15 Black 8/10/12 mm
- PSL18W15J91113 Perfect Silk Lashes W-Type J.15 Black 9/11/13 mm
- PSL18W15J08 Perfect Silk Lashes W-Type J.15 Black 8 mm
- PSL18W15J09 Perfect Silk Lashes W-Type J.15 Black 9 mm
- PSL18W15J10 Perfect Silk Lashes W-Type J.15 Black 10 mm
- PSL18W15J11 Perfect Silk Lashes W-Type J.15 Black 11 mm
- PSL18W15J12 Perfect Silk Lashes W-Type J.15 Black 12 mm
- PSL18W15J13 Perfect Silk Lashes W-Type J.15 Black 13 mm





# Perfect Silk Lashes

## PSL™ MINK LINE



### Glitter Lashes C-curl, thickness 0.15

- PSL18GL15C08S PSL Glitter Lashes C.15 (separate) 8 mm
- PSL18GL15C09S PSL Glitter Lashes C.15 (separate) 9 mm
- PSL18GL15C10S PSL Glitter Lashes C.15 (separate) 10 mm
- PSL18GL15C11S PSL Glitter Lashes C.15 (separate) 11 mm



# Perfect Silk Lashes

## PSL™ PREMIUM PLUS LINE

### Premium plus™

- a new line of eyelash extensions using the Volume and One by One techniques.
- a new high standard for the quality of the material, ease of use and environmental impact.
- new modern trends in fashion.

Premium plus™ lashes have a rich black color from the root to the tip. Enhance the look with perfect balance between a bright, catchy, attractive gloss and calm matte texture.

At the heart of the eyelashes is a soft and light synthetic fiber produced in Japan using new technologies in the synthesis of

polymers. They seem velvety and fluffy when you touch them. At the same time, the material is very durable and elastic. These qualities allow you to achieve impressive extension results without loss of comfort for the client.

The curl shapes and lash sizes are perfectly precise and meet the highest standards.

The number of strips in the tray has been increased to 20 - this is more economical to use and creates less waste. The strips are coated with Coating paper technology, i.e. they can be detached and attached several times without leaving any paper or glue residue.

Eco paper box is used for packaging, which corresponds to our views on ecology.

EXTENSION TECHNIQUE:	CURL:	THICKNESS:	LENGTH:	COLOR:
ONE BY ONE	C-curl	0.03 mm	6 mm - 14 mm	Black
VOLUME	D-curl	0.05 mm		
		0.07 mm		



# Perfect Silk Lashes

## PSL™ PREMIUM PLUS LINE



### C-curl, thickness 0.03

- PSL2003C81012 PSL Mink Lashes C.03 Black 8/10/12 mm (6+8+6)
- PSL2003C91113 PSL Mink Lashes C.03 Black 9/11/13 mm (6+8+6)
- PSL2003C07 PSL Mink Lashes C.03 Black 7 mm
- PSL2003C08 PSL Mink Lashes C.03 Black 8 mm
- PSL2003C09 PSL Mink Lashes C.03 Black 9 mm
- PSL2003C10 PSL Mink Lashes C.03 Black 10 mm
- PSL2003C11 PSL Mink Lashes C.03 Black 11 mm
- PSL2003C12 PSL Mink Lashes C.03 Black 12 mm
- PSL2003C13 PSL Mink Lashes C.03 Black 13 mm
- PSL2003C14 PSL Mink Lashes C.03 Black 14 mm

### C-curl, thickness 0.07

- PSL2007C1MIX PSL Mink Lashes C.07 Black 6/7/8/9/10/11/12/13/14 mm (1+2+2+3+3+3+3+2+1)



### C-curl, thickness 0.05

- PSL2005C81012 PSL Mink Lashes C.05 Black 8/10/12 mm (6+8+6)
- PSL2005C91113 PSL Mink Lashes C.05 Black 9/11/13 mm (6+8+6)
- PSL2005C07 PSL Mink Lashes C.05 Black 7 mm
- PSL2005C08 PSL Mink Lashes C.05 Black 8 mm
- PSL2005C09 PSL Mink Lashes C.05 Black 9 mm
- PSL2005C10 PSL Mink Lashes C.05 Black 10 mm
- PSL2005C11 PSL Mink Lashes C.05 Black 11 mm
- PSL2005C12 PSL Mink Lashes C.05 Black 12 mm
- PSL2005C13 PSL Mink Lashes C.05 Black 13 mm
- PSL2005C14 PSL Mink Lashes C.05 Black 14 mm



# Perfect Silk Lashes

## PSL™ PREMIUM PLUS LINE



### D-curl, thickness 0.03

- PSL2003D81012 PSL Mink Lashes D.03 Black 8/10/12 mm (6+8+6)
- PSL2003D91113 PSL Mink Lashes D.03 Black 9/11/13 mm (6+8+6)
- PSL2003D07 PSL Mink Lashes D.03 Black 7 mm
- PSL2003D08 PSL Mink Lashes D.03 Black 8 mm
- PSL2003D09 PSL Mink Lashes D.03 Black 9 mm
- PSL2003D10 PSL Mink Lashes D.03 Black 10 mm
- PSL2003D11 PSL Mink Lashes D.03 Black 11 mm
- PSL2003D12 PSL Mink Lashes D.03 Black 12 mm
- PSL2003D13 PSL Mink Lashes D.03 Black 13 mm
- PSL2003D14 PSL Mink Lashes D.03 Black 14 mm



### D-curl, thickness 0.07

- PSL2007D1MIX PSL Mink Lashes D.07 Black 6/7/8/9/10/11/12/13/14 mm (1+2+2+3+3+3+3+2+1)



### D-curl, thickness 0.05

- PSL2005D81012 PSL Mink Lashes D.05 Black 8/10/12 mm (6+8+6)
- PSL2005D91113 PSL Mink Lashes D.05 Black 9/11/13 mm (6+8+6)
- PSL2005D07 PSL Mink Lashes D.05 Black 7 mm
- PSL2005D08 PSL Mink Lashes D.05 Black 8 mm
- PSL2005D09 PSL Mink Lashes D.05 Black 9 mm
- PSL2005D10 PSL Mink Lashes D.05 Black 10 mm
- PSL2005D11 PSL Mink Lashes D.05 Black 11 mm
- PSL2005D12 PSL Mink Lashes D.05 Black 12 mm
- PSL2005D13 PSL Mink Lashes D.05 Black 13 mm
- PSL2005D14 PSL Mink Lashes D.05 Black 14 mm

# Perfect Silk Lashes

## PSL™ EYEBROW LINE

### Eyebrow Line I-curl, thickness 0.10 Black

- PSL1810E567BK PSL Eyebrow 0.10 Black 5/6/7 mm (2+4+6 lines)
- PSL1810E678BK PSL Eyebrow 0.10 Black 6/7/8 mm (4+6+2 lines)
- PSL1810E5BK PSL Eyebrow 0.10 Black 5 mm
- PSL1810E6BK PSL Eyebrow 0.10 Black 6 mm
- PSL1810E7BK PSL Eyebrow 0.10 Black 7 mm
- PSL1810E8BK PSL Eyebrow 0.10 Black 8 mm

### Eyebrow Line I-curl, thickness 0.10 Black Brown

- PSL1810E567BB PSL Eyebrow 0.10 Black Brown 5/6/7 mm (2+4+6)
- PSL1810E678BB PSL Eyebrow 0.10 Black Brown 6/7/8 mm (4+6+2)
- PSL1810E5BB PSL Eyebrow 0.10 Black Brown 5 mm
- PSL1810E6BB PSL Eyebrow 0.10 Black Brown 6 mm
- PSL1810E7BB PSL Eyebrow 0.10 Black Brown 7 mm
- PSL1810E8BB PSL Eyebrow 0.10 Black Brown 8 mm

### Eyebrow Line I-curl, thickness 0.10 Dark Brown

- PSL1810E567DB PSL Eyebrow 0.10 Dark Brown 5/6/7 mm (2+4+6)
- PSL1810E678DB PSL Eyebrow 0.10 Dark Brown 6/7/8 mm (4+6+2)
- PSL1810E5DB PSL Eyebrow 0.10 Dark Brown 5 mm
- PSL1810E6DB PSL Eyebrow 0.10 Dark Brown 6 mm
- PSL1810E7DB PSL Eyebrow 0.10 Dark Brown 7 mm
- PSL1810E8DB PSL Eyebrow 0.10 Dark Brown 8 mm

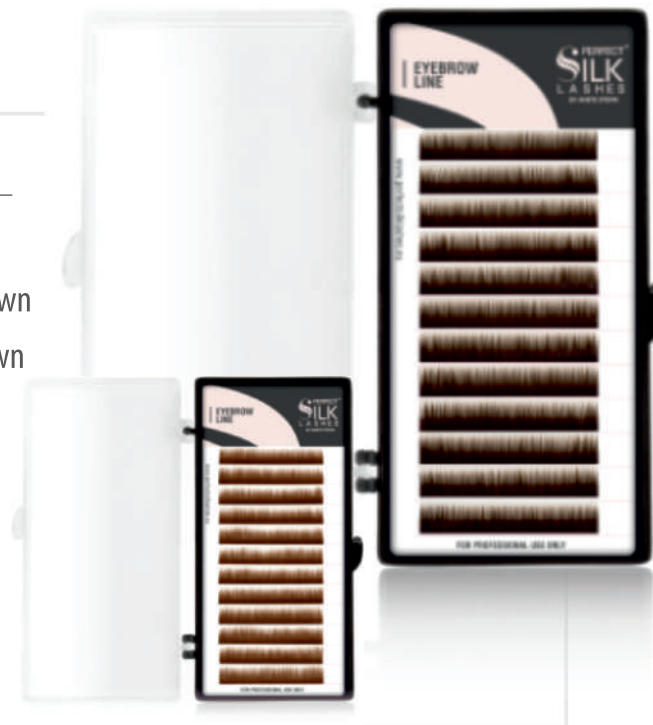


# Perfect Silk Lashes

## PSL™ EYEBROW LINE

Perfect Silk Lashes™ - Eyebrow Line extensions are made from special synthetic fibers and have very similar thickness and length to natural eyebrow. They do not cause allergies or irritations.





EXTENSION TECHNIQUE:	CURL:	THICKNESS:	LENGTH:	COLOR:
Eyebrow extension	I-curl	0.10 mm	5 mm - 8 mm	BK - Black BB - Black Brown DB - Dark Brown



# Perfect Silk Lashes

## PSL™ INDIVIDUAL LINE (FLARE LASHES)

Perfect Silk Lashes™ Individual Line eyelashes look more natural than any individual false lashes ever created, due to their curl, sheen and waterproof properties.

EXTENSION TECHNIQUE:	TYPES OF BUNCHES:	LENGTH:	COLOR:	
FLARE LASH extension technique	Single Flare Flare Double Flare 3D Density	Short Under (8 mm) Short (10,5 mm) Medium (12,5 mm) Large (15,5 mm)	Black Brown	
<b>TYPES OF BUNCHES</b>	 Single 3 eyelashes	 Flare 5 eyelashes	 Flare Double Density 10 eyelashes	 Flare 3D 15 eyelashes





# Perfect Silk Lashes

## PSL™ INDIVIDUAL LINE (FLARE LASHES)

### Individual Line

- PSL098510 Perfect Silk Lashes Flare Short Black-Under
- PSL098511 Perfect Silk Lashes Flare Short Black
- PSL098512 Perfect Silk Lashes Flare Medium Black
- PSL098513 Perfect Silk Lashes Flare Long Black
- PSL098515 Perfect Silk Lashes Flare Short Brown
- PSL098518 Perfect Silk Lashes Single Short Black-Under
- PSL098519 Perfect Silk Lashes Single Short Black
- PSL098520 Perfect Silk Lashes Single Medium Black
- PSL098521 Perfect Silk Lashes Single Long Black
- PSL098604 Perfect Silk Lashes Flare Double Density Short Black
- PSL098605 Perfect Silk Lashes Flare Double Density Medium Black
- PSL098606 Perfect Silk Lashes Flare Double Density Long Black
- PSL098712 Perfect Silk Lashes Flare 3D Medium Black



**Flare Black**



**Single Black**



**Flare Double Density Black**



**Flare Short Under Black**



**Single Short Under Black**



**Flare 3D Black**

# Perfect Silk Lashes

## PSL™ STRIP LINE DECORATE LASHES

Decorative eyelashes *Perfect Silk Lashes™* (sometimes referred as applied) made of synthetic material that does not irritate even the most sensitive eyes.

This kind of eyelash is popular with many fashionistas who use them to create a unique image.

Decorative eyelash is very easy to attach to the eyelids. You can do it yourself with the help of special glue *Perfect Silk Lashes Quick&Strong™ Eyelash Glue*.

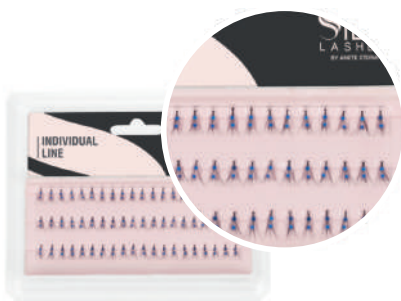


# Perfect Silk Lashes

## PSL™ STRIP LINE

PSL09C3556 PSL  
 Color Single

PSL09C3571 PSL  
 Color Single



PSL09C3654 PSL  
 Flare Decorated



PSL09D1022 PSL  
 Decorated Tip  
 (Mellow) Lashes  
 Colorful Daring



PSL09D1023 PSL  
 Decorated Tip  
 (Mellow) Lashes  
 Colorful Daring



PSL09D1051 PSL  
 Decorated Tip  
 (Mellow) Lashes  
 Colorful Daring



PSL09D1064 PSL  
 Decorated Tip  
 (Mellow) Lashes  
 Black Daring



PSL09D1081 PSL  
 Decorated Tip  
 (Mellow) Lashes  
 Black Daring



PSL09D1112 PSL  
 Decorated  
 Eyelashes with  
 Water Drops



PSL09D1126 PSL  
 Decorated  
 Eyelashes with  
 Acrylic Stones



PSL09D1130 PSL  
 Decorated  
 Feather  
 Eyelashes

# Perfect Silk Lashes

## PSL™ STRIP LINE



PSL09D1133 PSL  
Decorated  
Feather  
Eyelashes



PSL09D1159 PSL  
Decorated  
Feather Tipped  
Eyelashes



PSL09D1236 PSL  
Decorated  
Eyelashes with  
Sparkle Studs



PSL09D1331 PSL  
Decorated  
Eyelashes with  
Acrylic Stones



PSL09D1357 PSL  
Decorated  
Feather Tipped  
Eyelashes



PSL09D1137 PSL  
Decorated  
Feather Tipped  
Eyelashes



PSL09D1402 PSL  
Decorated  
Feather  
Eyelashes



PSL09D1403 PSL  
Decorated  
Feather  
Eyelashes



PSL09D1404 PSL  
Decorated  
Feather  
Eyelashes



PSL09D1431 PSL  
Decorated  
Feather Tipped  
Eyelashes



PSL09D1437 PSL  
Decorated Tip  
(Mellow) Lashes  
Black Daring



PSL09D1452 PSL  
Decorated  
Feather Tipped  
Eyelashes

# Perfect Silk Lashes

## PSL™ STRIP LINE



PSL09D4135 PSL  
 Decorated  
 Feather Tipped  
 Eyelashes



PSL09D4182 PSL  
 Decorated  
 Carnival Colorful



PSL09D4243 PSL  
 Decorated Glow  
 in the Dark



PSL09D4266 PSL  
 Decorated  
 Hologram



PSL09D4346 PSL  
 Decorated  
 Synthetic Hair  
 Colorful Wild



PSL09D4347 PSL  
 Decorated  
 Synthetic Hair  
 Colorful Wild



PSL09D4352 PSL  
 Decorated  
 Synthetic Hair  
 Colorful Wild



PSL09D4377 PSL  
 Decorated  
 Synthetic Hair  
 Colorful Wild



PSL09D4578 PSL  
 Decorated  
 Synthetic Hair  
 Colorful Wild



PSL09D4579 PSL  
 Decorated  
 Synthetic Hair  
 Colorful Wild



PSL09D4580 PSL  
 Decorated  
 Synthetic Hair  
 Colorful Wild



PSL09D4588 PSL  
 Decorated  
 Synthetic Hair  
 Colorful Wild

# Perfect Silk Lashes

## PSL™ STRIP LINE



PSL09D4591 PSL  
Decorated  
Synthetic Hair  
Colorful Wild



PSL09D4592 PSL  
Decorated  
Synthetic Hair  
Colorful Wild



PSL09D4981 PSL  
Decorated  
Carnival Colorful



PSL09D5010 PSL  
Decorated  
Carnival Colorful



PSL09D5097 PSL  
Decorated  
Eyelashes with  
Sparkle Studs



PSL09D5140 PSL  
Decorated  
Carnival Colorful



PSL09D5451 PSL  
Decorated  
Eyelashes with  
Acrylic Stones



PSL09D5648 PSL  
Decorated  
Synthetic Hair  
Colorful Wild



PSL09D4765 PSL  
Long Strip





PERFECT™  
**SILK**  
LASHES  
BY ANETE STEINA

**SWAROVSKY ELEMENTS™**

# Decorative Swarovsky stones **SWAROVSKI ELEMENTS™**

## **CR1825\_Swarovski Elements™ Flat 1.8 mm 25 psc**

Decorative stones Swarovski Elements™ have a flat shape and a diameter of 1.8 mm.

- These proportions make them more suitable for decorating natural or artificial eyelashes.
- The natural, soft sheen make lashes more saturated, colorful, and expressive.
- To afix the stones (including the skin) it is recommend to use the *Perfect Silk Lashes Quick&Strong™ Eyelash Glue*.

*Legend:*

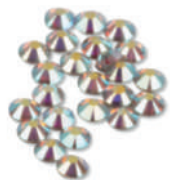
**AB** – Aurora Borealis

**AQ** – Aquamarine

**CZ** – Crystal

**LP** – Light Peach

**RU** – Ruby



CR1825AB Swarovski  
Elements™ Flat 1.8mm  
25 psc Aurora Borealis



CR1825AQ Swarovski  
Elements™ Flat 1.8mm  
25 psc Aquamarine



CR1825CZ Swarovski  
Elements™ Flat 1.8mm  
25 psc Crystal



CR1825LP Swarovski  
Elements™ Flat 1.8mm  
25 psc Light Peach



CR1825RU Swarovski  
Elements™ Flat 1.8mm  
25 psc Ruby





PERFECT™  
**SILK**  
LASHES  
BY ANETE STEINA

**COSMETIC  
AND SPECIFIC  
PRODUCTS**

## Perfect Silk Lashes **SaveLash™ Eye Make-Up Remover 150 ml**

### **PSL0211/150**

Universal product for removing makeup from the eyes and skin *Perfect Silk Lashes™ SaveLash™ Eye Make-Up Remover*.

- Gel base product selected by several main criteria: the product is ideal for eyelash extensions, has excellent cleansing properties and is minimally irritating to the skin. This allows you to use it as often as you need.
- *Perfect Silk Lashes™ SaveLash™ Eye Make-Up Remover* foams well, and cleanses delicately and gently. The clean feeling lasts for a long time.
- No tightens and does not dry the skin.

- *Perfect Silk Lashes™ SaveLash™ Eye Make-Up Remover* is recommended for home use after the treatment of all types of eyelash and eyebrow extensions.

FOR  
MAKE-UP  
REMOVING



## Perfect Silk Lashes **Eyelash UniCleanser™ 150 ml**

### **PSL0201/150**

The universal means for cleansing of eyelashes and the eyelid skin is *Perfect Silk Lashes™ Eyelash UniCleanser™*.

- Surprisingly gentle, hypoallergenic formula for removing makeup and eyelash defatting before the extension procedure.
- Has unique components that completely remove makeup from the eyelids and eyelashes.
- Extensive experience of application products for the cleansing of the *Perfect Silk Lashes™ Eyelash UniCleanser™* suggests that this product is optimal for removing oil-containing substances and

particles of mascara from the surface of the eyelashes.

- It does not leave a greasy film. Using the cleaner *Perfect Silk Lashes™ Eyelash UniCleanser™*, you are guaranteed to get the best results of extension.
- This universal cleaner is used in procedures **One by One, Volume, Flare eyelash extension** and **Eyebrow extension**.

CLEANSING  
OF THE  
EYELASHES



## Perfect Silk Lashes **Eyelash Pre-Treatment 15 ml**

### **PSL0221/15**

*Perfect Silk Lashes™ Eyelash Pre-Treatment* is an excellent product for a deep cleansing before eyelash extension procedure (especially in the case of full or partial removing of the old extended eyelashes).

- Recommended for use after *Perfect Silk Lashes™ Eyelash UniCleanser™*.
- Apply *Perfect Silk Lashes™ Eyelash Pre-Treatment* with a micro brush and wipe the lashes from all sides. Dry lashes thoroughly with an air-blower or fan (30-60 seconds is enough) before applying eyelash or eyebrow extensions.

- *Perfect Silk Lashes™ Eyelash Pre-Treatment* can also be used for eyebrow extension.

FOR A  
DEEP CLEANSING  
BEFORE  
EYELASH  
EXTENSION



## Perfect Silk Lashes **Eyelash Glue Primer 15 ml**

### **PSL0231/15**

*Perfect Silk Lashes™* **Eyelash Glue Primer** significantly improves the quality of your work.

- The purpose of this product to create a more reliable bonding of natural and artificial eyelashes. You can enjoy the beautiful, long eyelashes 1-2 weeks more.
- When you apply primer, client's eyes should be closed. Do not apply directly on the eyes. Hold a flat, lint-free cotton pad under lashes to catch excess primer.
- Apply *Perfect Silk Lashes™* **Eyelashes Glue Primer** with a micro brush and wipe the lashes from all sides.

- *Perfect Silk Lashes™* **Eyelash Glue Primer** can also be used for eyebrow extension.
- Does not cause allergies.
- Has a slight odor.

ENHANCES  
THE ADHESIVE  
PROPERTIES  
OF THE GLUE



## Perfect Silk Lashes **LongFlex™ Glue 5 g Super Strong Black (4 sec)**

### PSL0341/5

The new generation glue **LongFlex™ Glue**.

- With its unique qualities, *Perfect Silk Lashes™ LongFlex™ Glue* enables you to perfectly apply lash extensions.
- Its lightly fluid consistency spreads evenly along the lash line without leaving any residue.
- It is pigmented black to disguise the glue bond and complement your natural eyelash colour.
- Non-drip, hypoallergenic, low odour formula.
- Quick dry time of 4 seconds.
- *Perfect Silk Lashes™ LongFlex™ Glue* presents low vapour allowing clients to

leave eyes open while applying lower lashes, not recommended for extreme sensitive eyes.

- Lash extensions are safe and not harmful to natural lashes. Their beautiful shape will last for about 4 weeks.
- *Perfect Silk Lashes™ LongFlex™ Glue* has been specially formulated for **One by One System** lash extension treatment.

BLACK GLUE  
FOR EYELASH  
EXTENSION



## Perfect Silk Lashes **InfinityFlex™ Glue 5 g Rapid Super Strong Black (3 sec)**

### PSL0331/5

*Perfect Silk Lashes™* **InfinityFlex™ Glue** is a really innovative product. Compared to traditional lash adhesive which only guaranteed good resistance, *PSL™* **InfinityFlex™ Glue** formula does not compromise the natural movement of eyelids and lasts longer.

- It is a hypoallergenic eyelash extension adhesive formulated for fast attachment speed and is particularly suitable for extremely thin lashes, 0.03-0.10 of thickness.
- Its lightly fluid consistency spreads evenly along the lash line.
- Quick dry time of 3 seconds.

- *Perfect Silk Lashes™* **InfinityFlex™ Glue** has a strong bonding period of up to 5 weeks.
- Specially recommended for experienced professionals when performing **One by One System** technique, required for **Volume System** technique.



## Perfect Silk Lashes **WonderFlex™ Glue 5 g Rapid Ultra Strong Black (2 sec)**

### PSL0342/5

*Perfect Silk Lashes™ WonderFlex™ Glue* best meets the needs of lash professionals. If you are an experienced lash technician who appreciates quality products and fast turnaround time - this is the right product for you!

- *Perfect Silk Lashes™ LongFlex™ Glue* traditional formula has been enriched with innovative properties and turned into the unique, special *Perfect Silk Lashes™ WonderFlex™ Glue* formula.
- Quick dry time of 2 seconds
- Strong bonding period of up to 6-7 weeks.

- *Perfect Silk Lashes™ WonderFlex™ Glue* retains flexibility, featuring low odour, perfect liquid consistency and long shelf life.
- Your customers will more appreciate the quality of your work, if extended eyelashes stay longer.
- Specially formulated for **Volume System** lash extension treatment.





## Perfect Silk Lashes **MegaFlex™ Glue 5 g Ultra Rapid Extra Strong Black (1 sec)**

### PSL0343/5

*Perfect Silk Lashes™ MegaFlex™* glue fully meets the requirements of beauty professionals. Ideal for industry experts who are looking for a quality product with fast drying times.

- The ultra-fast drying formula (0.5-1 seconds) guarantees a duration of up to 7-8 weeks.
- Glue is specifically designed for **Volume** and **Mega Volume System**. It can also be used with **One by One**, but in this case, it is recommended for masters of eyelash extensions with experience.
- Despite its extreme characteristics, the glue remains elastic, has an ideal

consistency, a long shelf life, and has virtually no smell.

- Optimal drying conditions remain in the classical range - 18-23 °C at a humidity of 50-60%.
- Due to the perfect fit and applying the right amount of glue, the duration of the result is increased to 8 weeks.
- Before applying the glue, we recommend using *Perfect Silk Lashes™ Eyelash Glue Primer*.
- FOR PROFESSIONAL USE

GLUE FOR  
EYELASH  
EXTENSION



## Perfect Silk Lashes **CrystalFlex™ Glue Strong Clear 5 g**

### **PSL0344/5CL**

*Perfect Silk Lashes™ CrystalFlex™ Glue* is a core element of *PSL™* adhesive line. Provided with tailor-made properties.

- Ideally formulated to be used by all lash stylists - from beginners to the most advanced - as an alternative adhesive to the main black glue.
- Its innovative properties allow you to achieve perfect lash extensions.
- Quick dry time of 5 seconds.
- *Perfect Silk Lashes™ CrystalFlex™ Glue* has a strong bonding period of up to 3-4 weeks.
- Its lightly fluid consistency spreads evenly along the lash line.

- It is provided with a clear tone to disguise the glue bond when wearing coloured lash extension or for bond Swarovski Elements™.
- *Perfect Silk Lashes™ CrystalFlex™ Glue* hypoallergenic formula presents low vapour allowing clients to leave eyes open while applying lower lashes. Not recommended for extreme sensitive eyes.
- *Perfect Silk Lashes™ CrystalFlex™ Glue* has been specially formulated for **One by One System** lash extension treatment.

TRANSPARENT  
GLUE  
FOR EYELASH  
EXTENSIONS



## Perfect Silk Lashes **StylFlex™ Glue Strong Clear 5 g**

### **PSL0352/5CL**

*Perfect Silk Lashes™ StylFlex™ Glue* is specially designed for eyebrow extensions. It blends seamlessly with all natural eyebrows because of the perfect crystal clear tint.

- This fast-bonding, hypoallergenic adhesive normally lasts 3-4 weeks with correct aftercare.
- Its fluid liquid consistency and light texture facilitate hair extensions application.
- With proper application of eyebrow extensions and proper care, the result will last for 3-4 weeks.
- Low fume and low odour formula.

- Quick drying-time of 5 seconds.
- Minimal amount of adhesive is required to apply extensions to natural eyebrows.
- *Perfect Silk Lashes™ StylFlex™ Glue* is specially recommended for experienced professionals who have attended PSL™ Eyebrow Design & Extension Training Course.

TRANSPARENT  
GLUE  
FOR EYEBROW  
EXTENSIONS



## Perfect Silk Lashes **Quick&Strong™ Eyelash Glue Clear 7 g**

### **PSL0603/7**

*Perfect Silk Lashes™ Quick&Strong™ Eyelash Glue* (transparent, water resistant glue for flare eyelashes).

- Waterproof glue for modelling decorative eyelashes.
- The glue is very suitable working with the flares and strip lashes, with rhinestones and other decorations for eyelashes.
- Latex based glue which makes it elastic, comfortable, and absolutely safe for the eyes.
- The glue has liquid consistency and milky color. In the process of drying the glue becomes transparent, which

guarantees the performance of the procedure at the highest level.

- *Perfect Silk Lashes™ Quick&Strong™ Eyelash Glue* is hypoallergenic.
- No irritation and redness in the eyes.

TRANSPARENT  
WATER RESISTANT  
GLUE FOR FLARE  
EYELASHES



## Perfect Silk Lashes **Eyelash Glue Remover Gel 15 g**

### **PSL0401/15**

*Perfect Silk Lashes™* **Glue Remover Gel** ensures the safe removal of extended eyelashes.

- More recommended for a beginner.
- Apply *Perfect Silk Lashes™* **Glue Remover Gel** with a micro brush on the lashes to be removed. Allow the remover to sit for a few minutes as it breaks down the eyelash extension bond. After a few minutes, the bond will have been loosened and the lashes can then be removed. Excess remover must be washed off thoroughly with water.
- Eyelash Glue Remover Gel can also be used for eyebrow extension.

- The bottle contains 15 ml. which will last for a large number of procedures.

GEL FOR  
REMOVING  
GLUE  
FROM LASHES



## Perfect Silk Lashes **Eyelash Glue Remover Cream 20 ml**

### **PSL0441/20**

*Perfect Silk Lashes™* **Eyelash Glue Remover Cream** ensures the safe removal of extended eyelashes.

- More recommended for a beginner.
- Remover has a soft creamy texture and a pleasant smell of strawberries. Thus, your client feels comfortable during the procedure.
- Apply *Perfect Silk Lashes™* **Eyelash Glue Remover Cream** with a micro brush on the lashes to be removed. Allow the remover to sit for a few minutes as it breaks down the eyelash extension glue. After a few minutes, the glue will have been loosened and the lashes can then

be removed. Excess remover must be washed off thoroughly with water.

*Perfect Silk Lashes™* **Eyelash Glue Remover Cream** can also be used for eyebrow extension.

- The jar contains 20 ml. which will last for a large quantity of procedures.

CREAM  
FOR REMOVING  
GLUE FROM  
LASHES



## Perfect Silk Lashes **Eyelash Glue Remover 10 g**

### **PSL0421/10**

*Perfect Silk Lashes™ Eyelash Glue Remover 10g* has a similar purpose as the product *Perfect Silk Lashes™ Eyelash Glue Remover 15g*.

- The difference is in the formula, which enhances the solvent properties of the product in the 10 g package. Thus the process of removing the eyelashes is faster, but requires more attention and care.
- *Perfect Silk Lashes™ Eyelash Glue Remover 10g* is recommended for professionals with experience.
- You need to apply a little fluid to the tip of a special brush applicator to remove the glue and it processes within 2-3 seconds. Then you can pull the tip of the artificial hair and remove it.

LIQUID FOR  
REMOVING  
GLUE  
FROM LASHES



## Perfect Silk Lashes **Eyebrow Glue Remover 10 g**

### **PSL0431/10**

Used in removal of eyebrow extensions.

- The glue used in eyelash and eyebrow extensions have differences in composition. For effective removal of adhesive, different components in solvent formulas are used.
- For the procedure of eyebrow extension removal the perfect *Perfect Silk Lashes™* **Eyebrow Glue Remover 10 g** was created. Hair removal is fast and painless.
- To remove the glue you need to apply a little fluid on the tip of a special brush applicator and it processes within 2-3 seconds. Then you can pull tip of the artificial hair and remove it.

LIQUID FOR  
REMOVING  
GLUE FROM  
EYEBROWS







PERFECT™  
**SILK**  
LASHES  
BY ANETE STEINA

**ACCESSORIES  
& TOOLS**

## Perfect Silk Lashes **Tweezers**

*Perfect Silk Lashes™* offer 4 classic tweezers for eyelash extension.

- The most popular and in demand among professionals and beginner specialists.
- The tweezers are made of special surgical steel of high strength, resistant to oxidation and does not cause irritation on the skin.



### **PSL1102**

Perfect Silk Lashes™  
Tweezers with  
straight tip



### **PSL1103**

Perfect Silk Lashes™  
Tweezers with  
curved tip



### **PSL1108**

Perfect Silk Lashes™  
Tweezers with  
straight tip Var.2



### **PSL1109**

Perfect Silk Lashes™  
Tweezers with  
curved tip Var.2

## Perfect Silk Lashes **Tweezers**

*Perfect Silk Lashes™* has a range of high quality, professional tools for eyelash extensions. Among them there is the red-black line of 4 classic tweezers.

- The shape of these *Perfect Silk Lashes™* tweezers is designed and is optimal for the extension procedure.
- Material - special surgical steel.
- The color coating is resistant to oxidizing agents and solvents.
- No doubt each specialist will find the perfect combination of working instruments.



**PSL1119**

Perfect Silk Lashes™  
 Tweezers with  
 straight tip Black



**PSL1120**

Perfect Silk Lashes™  
 Tweezers with  
 curved tip Black



**PSL1121**

Perfect Silk Lashes™  
 Tweezers with  
 straight tip Var.2 Red



**PSL1122**

Perfect Silk Lashes™  
 Tweezers with  
 curved tip Var.2 Red

## Perfect Silk Lashes **X-Type Tweezers**

### **PSL1135**

#### Eyelash extension **X-Type** Tweezer

- This **X-type** tweezers work as inverted forceps.
  - It is specially designed to grip objects without the need for constant finger force.
  - This type of tweezers will automatically hold until you push to release the object. Thus it works in the opposite direction in comparison with normal tweezers and is very widely used with eyelash extensions.
- In necessary circumstances, you can prepare several **X-type** tweezers with captured lashes to make a continuous application.
  - Size: 13 cm



## Perfect Silk Lashes **Tweezers Extra Angled**

### **PSL1136**

Short curved tweezers for eyelash extensions.

- Made of high quality German stainless steel.
- Although this type of tweezers is designed for the **Volume** technique of extensions.
- Short, sharp angled tips will be in demand for the **One-by-One** technique extension.
- Normally these tweezers are used to free up space between lashes, but some specialists like to use these tweezers upside down to capture lashes.
- Size: 12 cm



## Perfect Silk Lashes **Tweezers Chisel-Type**

### **PSL1137**

The perfect tweezers for **Volume** extensions.

- The tips of these tweezers are made in the form of a chisel and have a special grinding angle that is ideal for capturing ultra-fine lashes (0.05-0.06-0.07 mm) without damaging them.
  - Another feature is the indentations on the ends. This feature allows the user to close the tweezers, while not exerting much pressure on the lashes.
  - It is similar to many volume extension tweezers, but has more beveled ends, so that the specialist can see without interference at the place of gluing the lashes.
- If you still use straight tweezers in the **Volume** extension technique, they are hard to use. Now you have new, perfect tweezers!
  - Size: 12.5 cm



## Perfect Silk Lashes **Tweezers**

The series of tweezers for **Volume** eyelash extension technique.

- Made of high quality German stainless steel.
- The different shapes of the tips allow the master to choose the perfect tool for the job or to use all the tweezers depending on the selected lashes. The ends are carefully machined so that they come into contact over the entire area and with no gap.
- An additional convenient device is the scale of the ruler, applied on one side of the base. Especially this innovation should appeal to beginners.

- With this (always available during the extension) ruler is easy to choose the correct size of the lashes.
- Size: 11,5 cm



**PSL1138**

Perfect Silk Lashes™  
 Volume Eyelash  
 Tweezers Flat



**PSL1139**

Perfect Silk Lashes™  
 Volume Eyelash  
 Tweezers Tower Point



**PSL1140**

Perfect Silk Lashes™  
 Volume Eyelash  
 Tweezers Extra Sharp

## Perfect Silk Lashes **Accessories**

### **PSL1101**

Perfect Silk Lashes™ Scissors

- Scissors are made of special high quality surgical steel.
- For your convenience, the tips have a slight bend.
- Size 9 cm



### **PSL1104 or 06-0021**

Perfect Silk Lashes™ Two-side brush

- Two-sided brush.
- The brush is used for brushing and styling of eyelashes before, during, and after the procedure.



### **PSL1115 or 06-0022**

Perfect Silk Lashes™ Eyelash curler

- **Eyelash curler** brush is required during the whole eyelash extension procedure.
- It can help to clean, comb, and style your eyelashes.
- You can also recommend it to customers to use at home for eyelash care.





## Perfect Silk Lashes **Accessories**

### PSL0502/5R

PSL™ Eyelashes Patch Red

- Cellulose, allergy-free patch treated with medical adhesive.
- Applied during the procedure in order to isolate lower eyelashes and the lower eyelid from contact with the extension zone.
- Easy to remove without stretching the skin.



### PSL0504

PSL™ Eyelashes PE Surgical Tape

- Hypoallergenic plasters that meet medical requirements.
- Ideal for use in sensitive area around the eyes.
- With *Perfect Silk Lashes™ Eyelashes PE Surgical Tape* is easy and convenient to isolate the lower lashes during extension.
- Width 1,25 cm. Length 4,5 m.
- Also available PSL0504/24 - Box of 24 pcs rolls.



### PSL0505

PSL™ Micropore Surgical Tape

- Paper, hypoallergenic tape. Not made with natural rubber latex.
- Gentle adhesion leaves minimal adhesive residue upon removal.
- Width 1,25 cm. Length 4,5 m.
- Also available PSL0505/24 - Box of 24 pcs rolls.



## Perfect Silk Lashes **Accessories**

### PSL0506

#### PSL Eyelashes PE Surgical Tape

Hypoallergenic plasters that meet medical requirements.

- Ideal for use in sensitive area around the eyes
- With *Perfect Silk Lashes™ Eyelashes PE Surgical Tape* is easy and convenient to isolate the lower lashes during extension
- Width 1,25 cm. Length 9 m
- Color: Pink



### 04-0001

#### Paper pad, lint free 100 pair/bag

Perfect Silk Lashes™ - ultra-thin eye pads made from special high-quality paper. Very gentle and almost imperceptible, they are suitable for clients who have very sensitive eyes and skin. With an intense white color, they allow you to work with maximum precision. Packaging contains 100 pairs.

- Ideal for sensitive eyes
- Very thin for maximum customer comfort
- Do not leave lint
- Suitable for use in eyelash extensions



## Perfect Silk Lashes **Accessories**

### PSL1149

Perfect Silk Lashes™ Lash Box X18

Organizer for eyelashes. Allows you to have eyelashes always at hand, avoiding the ingress of dust and the effects of external factors on them. In a complete set of 18 plates, at least 9 strips of eyelashes each.

Enhance eyelash extension with the revolutionary, plastic organizer Lash Box from *Perfect Silk Lashes™*.

- Thanks to the completely transparent design, you will be comfortable and quickly find the desired size of eyelashes.
- With the Lash Box, the extension process will be faster and easier.



### PSL1151

Lash Holder (1 pcs) for Lash Box X9 and X18

Lash Holder not only allows you to place at least 9 strips with eyelashes, but also sort them in a convenient manner. Thus, the process of eyelash extension becomes easier and faster.

Optimize your eyelash extensions with revolutionary *Perfect Silk Lashes™* eyelash storage accessories.

- The unique design of the product allows you to have on hand at once several strips of eyelashes with different sizes, thickness and curl shapes.



## Perfect Silk Lashes **Accessories**

### 06-0010

#### Pink color mini fan

Silent USB Fan. Creates a light air flow for drying eyelashes at the end of extension procedure.

- USB charging - saving on batteries
- Accelerate the polymerization of the glue.
- Comfortable, ergonomic design.
- A USB charging cable is included.



### 06-0011

#### Mist, USB charging

Multifunctional Nano-spray device to moisturize the skin and improve the polymerization of the glue during the eyelash extension procedure. An indispensable accessory for rooms with dry, warm air.

- Under the influence of ultrasound creates an invisible cloud of ionized vapor. Thanks to this process, water molecules are released from

microparticles and can be easily absorbed by the skin, moisturizing and revitalizing it.

- Fill the container under the cap with water. Turn on the Nano-spray and from a distance of about 25 cm start spraying towards the face or the place of the extension procedure.
- A USB charging cable is included.



## Perfect Silk Lashes **Accessories**

### Microbrush

- Disposable applicators 100 in one tube.
- Bendable neck facilitates the placement of material in hard to reach areas.
- Non-absorbent, non-linting fibers suspend solutions.
- Without dripping or spilling.
- Applicators are available in different sizes: Superfine, Fine, Long Head and Extra Long Head.
- Also available in box of 4 tubes



#### **PSL1124SF**

PSL™ Micro Applicators  
 Super Fine



#### **PSL1124F**

PSL™ Micro Applicators  
 Fine



#### **PSL1124LH**

PSL™ Micro Applicators  
 Long Head



#### **PSL1124ELH**

PSL™ Micro Applicators  
 Extra Long Head



AVIABLE  
 IN BOX  
 OF 4 TUBES

## Perfect Silk Lashes **Accessories**

Glass and stone surface used for glue for the extension procedure. Glass and stone don't allow the glue to dry quickly, in comparison with plastic surfaces on which the adhesive solidifies much faster.

Choice of available products:

- **Jade Stone.** Cold, heavy, beautiful jade stone will serve you the best during the eyelash extensions procedure. Available in two different sizes: 2.5 cm and 5 cm.
- **Irish Diamond.** Make a note of glamour to the eyelash extension procedure! Surface for glue in the form of a mega diamond. Perfectly polished surface will serve as a great place to work with glue.
- **Crystal Cube.** Has a well in the center. If you drop your glue it does not spread on the surface. Thus, the adhesive lasts longer and retains its original properties.



**PSL1107/10MM**

Perfect Silk Lashes  
 Glass for glue  
 95x45x10 mm



**PSL1111**

Perfect Silk Lashes  
 Irish diamond



**PSL1129**

Perfect Silk Lashes  
 Crystal Cube



**PSL1112**

Perfect Silk Lashes  
 Jade Stone 5 cm



**PSL1130BP**

Perfect Silk Lashes  
 Glue Ring (big  
 with partition)

## Perfect Silk Lashes **Accessories**

### **PSL1131**

PSL™ 3D Ring disc

Special ring for the adhesive.

- Used together or separately with O-disk.



### **PSL1133**

PSL™ Volume Extension U-Band

A wonderful product for those who work with the lashes in the tray and prefer to have more comfort and cleanliness.

- Strips of eyelashes are conveniently fixed on a U-shaped ring surface.



### **PSL1150**

PSL™ Glue Pin

Needle for glue. This product can be very useful when a cork has formed in the spout of glue bottle, i.e. dried glue.

- Use a sharp needle (located inside to avoid injuries) by pushing the Glue Pin onto the bottle nozzle.



### **PSL1163**

PSL™ U-Shape Lash Holder

U-shaped crystal for eyelash extension.



## Perfect Silk Lashes **Accessories**

### **PSL1113**

PSL™ Rubber sponge

Sponge for gentle cleansing of the face and makeup removal. Also very convenient during eyelash extensions.



### **PSL1118**

PSL™ Silicone Pad

Silicone disc for working with eyelashes.

- Before the eyelash extension procedure, lay out the lashes of required length and thickness.
- The main feature of this product is that the tips of the eyelashes look up or “stand on end”.
- This facilitates holding the lashes with tweezers, which, in turn, reduces the procedure time.



### **06-0020**

Mascara brush, black Pack 50 pcs

The disposable eyelash brush for *Perfect Silk Lashes™* line is an irreplaceable tool throughout the entire eyelash extension procedure.

- Allows you to clean, brush and curl eyelashes.
- Ideal for subsequent care for extended eyelashes.
- Can also be used as an eyebrow brush.
- One pack contains 50 pieces.





## Perfect Silk Lashes **Air-Blower**

A product for drying all types of glue *Perfect Silk Lashes™*.

- A product for drying glue ensures proper air flow, without causing the client discomfort.
- Perfect Silk Lashes Air Blower is made of soft rubber and has a thin, long nose.
- Helps to significantly reduce procedure time.



**PSL1114BK**

Perfect Silk Lashes  
Air-blower Large Black



**PSL1144P**

Perfect Silk Lashes  
Air-blower Large Pink



**PSL1144**

Perfect Silk Lashes  
Air-blower Small

## Perfect Silk Lashes **Mannequin head and mask**

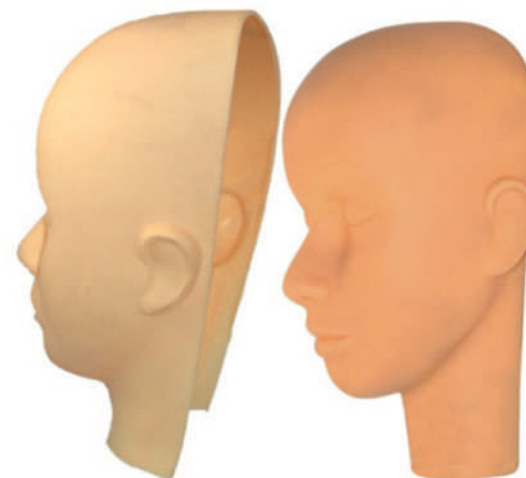
Mannequin training head for eyelash extensions.

- It takes practice to perform quality work. The mannequin was developed to help you practice doing the first procedures of eyelash extensions with confidence.
- On the eye area of the mannequin you can place decorative eyelashes, at which a new beginner specialist can work on their skills before the procedure is done on the client.
- As an optional accessory for specialists there is a mask available for the mannequin. Thus the mannequin can be reused time and time again.



**PSL1116**

Perfect Silk Lashes  
Mannequin head



**PSL1117**

Perfect Silk Lashes  
Mannequin head mask

## Perfect Silk Lashes **Eye Shape Template**

### **PSL1126**

A great way to improve your eyelash extension skills on special patterned eyes.

- Special silicon base that displays the different positions, shapes, and types of eyes, made in bulk form.
- The template of the eye shape is designed to better prepare you to work with clients.



## Perfect Silk Lashes **Magnifying Glass**

### **PSL1127W**

*Perfect Silk Lashes™* magnifying glasses with 5 different lenses and LED illumination.

- Provides optimum vision during the eyelash extension procedure and leave your hands free.
- Glasses can be worn alone or over your glasses.
- It has a lightweight frame with interchangeable lenses. When you don't need them, you can tilt the lens up with just one movement.
- There is a built-in flashlight with a super-bright led.
- Attached are three lenses with

different magnification levels (1.0 X, 1.5 X, 2.0 X, 2.5 X, 3.5 X).

- Operates by 3 x LR1130 replaceable batteries (batteries included).



## Perfect Silk Lashes **Magnifying Mirror**

### **PSL1134**

Magnifying mirror in a metallic frame.

- Made of high quality German stainless steel.
- Great for specialists who perform eyelash extensions, chemical wave of eyelashes or a procedure using semi-permanent mascara.
- Magnifying mirror is intended to focus and control the desired result. Thus

the specialist eliminates the need to constantly bend over to look under the eyelashes.



PERFECT™  
**SILK**  
LASHES  
BY ANETE STEINA

**AFTER CARE**



## Perfect Silk Lashes **SaveLash™ Eye Make-Up Remover 150 ml**

### **PSL0211/150**

Universal product for removing makeup from the eyes and skin *Perfect Silk Lashes™ SaveLash™ Eye Make-Up Remover*.

- Gel base product selected by several main criteria: the product is ideal for eyelash extensions, has excellent cleansing properties and is minimally irritating to the skin. This allows you to use it as often as you need.
- *Perfect Silk Lashes™ SaveLash™ Eye Make-Up Remover* foams well, and cleanses delicately and gently. The clean feeling lasts for a long time.
- No tightens and does not dry the skin.

- *Perfect Silk Lashes™ SaveLash™ Eye Make-Up Remover* is recommended for home use after the treatment of all types of eyelash and eyebrow extensions.

FOR  
MAKE-UP  
REMOVING



## Perfect Silk Lashes **Heated Eyelash Curler**

### **PSL1106**

- *Perfect Silk Lashes™* thermo curler for eyelashes
- **A unique new device** for thermo eyelash curling. An alternative to mechanical wave.
- Does not ruin the natural eyelashes.
- Recommended for home use.
- It is also used as an eyelash curler before the extension procedure.
- Allows you to create beautiful and natural curl.
- The kit includes: 1 pc. battery type AAA.

THERMO  
CURLER FOR  
EYELASHES





## Perfect Silk Lashes **Curly Black Mascara 10 ml**

### PSL1203/10

*Perfect Silk Lashes™* **Curly Black Mascara** with curly effect - expressive eyes and perfect care for eyelash extensions and natural eyelashes.

- Home care for extended eyelashes has certain requirements for the products. The mascara's formula contains no damaging ingredients to the structure of the adhesive used in the extension, and the texture and shape of the brush minimizes the mechanical stresses on the bonding area. Together, these properties allow you to retain your extended eyelashes for 1-2 weeks more.
- *Perfect Silk Lashes™* **Curly Black Mascara** with curly effect goes on easily

and smoothly. It evenly bends each lash without making them stiff or sticking together.

- It is easily washed off using special product *Perfect Silk Lashes™* to remove eye makeup.



### PSL1203BOX24

- Also available PSL1203BOX24 - Box of 24 pcs.



## Perfect Silk Lashes **Eyelash Extra Fixing Gel 10 ml**

### PSL1213/10

*Perfect Silk Lashes* **Extra Fixing Gel** - is perfect care for eyelash extensions and natural eyelashes.

- The main use for this product is to fix the shape of the lashes and to protect from external factors.
- The gel spreads easily and evenly on the lashes, without sticking together, forming a thin protective layer. This feature will allow you to keep your extended eyelashes for 1-2 weeks more.
- Combined with *Perfect Silk Lashes* **Heated Eyelash Curler** you can enhance the intensity of the curl and make your look even more attractive.

- *Perfect Silk Lashes* **Extra Fixing Gel** does not irritate the mucous membrane of the eye, and does not contain alcohol or fragrances.
- Perfect base under colored mascara.



### PSL1213BOX24

- Also available PSL1213BOX24 - Box of 24 pcs.



## Perfect Silk Lashes **ProteLift™ Eye Patch**

Anti-aging *Perfect Silk Lashes™* - **ProteLift™ Eye Patch** specially designed for eyelash extensions and for home care.

- Non-irritating, fragrance free and hypoallergenic.
- Soothes and hydrates underneath the eyes resulting in beautiful bright and firm skin.
- Reduces the appearance of wrinkles and puffiness around the eyes.
- Smooth surface for an easier eyelash application.

**ProteLift™ Eye Patch Classic Style** and **Banana Style** - this is a universal patch. You can use it for any procedures of extension, curling, lifting or lamination.

**ProteLift™ Eye Patch Comfortable Style** - This patch is more specific and will be necessary for you in special cases, such as for clients with deep-set eyes.

### PSL1123-01

PSL ProteLift™ Eye Patch (*pack 10 pair*)  
 Classic Style



### PSL1123-02

PSL ProteLift™ Eye Patch (*pack 10 pair*)  
 Comfortable Style



### PSL1123-03

PSL ProteLift™ Eye Patch (*pack 10 pair*)  
 Banana Style



HYDRATING,  
 WITH ANTI-AGING  
 EFFECT

## Perfect Silk Lashes **LiveKeratin™ Nourishing Lotion 7 ml**

### PSL1520

*Perfect Silk Lashes™* **LiveKeratin™ Nourishing Lotion** is a product specially designed for home care. It is recommended to use in the morning and evening. It is easy to apply with a brush, as you usually do with mascara. Apply to cleansed lashes, from root to tip.

- The lotion is rich in components that enhance the growth of eyelashes. This makes this product truly unique and effective. After a few days of application, you will see changes on your eyelashes. They will become stronger and longer, acquire a rich color.
- Plant extracts have pronounced strengthening and nourishing properties.
- Keratin restores the structure and enhances growth.
- Panthenol acts as a conditioner - softens, moisturizes the eyelashes, makes them smooth and gives shine.
- Does not contain: silicone, paraffin, formaldehyde, mineral oils, parabens.

RICH COLOR  
STRONGER  
EYELASHES





PERFECT™  
**SILK**  
LASHES  
BY ANETE STEINA

**PERMANENT, LIFT  
AND LAMINATIONS**

## Perfect Silk Lashes **Permanent Eyelashes**

### PSL1501/PL

Perm Lotion (Pink)

Perm Lotion (pink composition for chemical curling of the eyelashes).

- Pink composition for chemical curling *Perfect Silk Lashes™*.
- Hypoallergenic, gentle, chemical pink composition for softening of corneal layer of eyelashes.
- Safe for eyelid skin.



### PSL1502/SL

Setting Lotion (Light Blue)

Setting Lotion (light blue composition for chemical curling of the eyelashes).

- Blue composition for chemical curling *Perfect Silk Lashes™*.
- Hypoallergenic, gentle, chemical blue composition for fixation of corneal layer of eyelashes.
- Safe for eyelid skin.



### PSL1503/NL

Nourishing Lotion (Yellow)

Nourishing Lotion (yellow regenerative composition).

- Yellow regenerative composition *Perfect Silk Lashes™*.
- Protein nourishing mask to restore and add nourishment to the lashes after chemical perm.



### PSL1504/CL

Cleaning Lotion (Transparent)

Cleaning Lotion (transparent cleansing composition).

- Transparent cleansing composition *Perfect Silk Lashes™*.
- A means for removing the roller from the skin of the eyelids and clean the eyelashes of glue.



## Perfect Silk Lashes **Perm Rollers**

**Perm Rollers** - rollers for eyelash chemical perm.

- Disposable rollers packaged 32 pieces in a pack (16 pairs).
- Available in 4 sizes - S/M/L/XL - to achieve the different intensity of curl.
- Easy to bend.
- Lint free.
- Hypoallergenic.



### **PSL1601/S**

PSL Perm Rollers  
Small

### **PSL1602/M**

PSL Perm Rollers  
Medium

### **PSL1603/L**

PSL Perm Rollers  
Large

### **PSL1604/XL**

PSL Perm Rollers  
Extra Large

### **PSL1702/GL**

PSL Glue for Permanent Rollers 5g

Glue for Permanent Rollers

- Glue allows you to quickly and securely fix the lashes on the roller.
- Resistant to chemical compounds, but is easily removed after the procedure.
- Hypoallergenic.





## Perfect Silk Lashes **Permanent Eyelash Professional Kit**

### **PSL14EPK-I**

*Perfect Silk Lashes™* **Permanent Eyelash Kit** - set for a chemical wave of eyelashes – the perfect solution for straight lashes.

- The process of formation of a curl is simple and can be performed as a separate procedure. Because of this, any specialist has the opportunity to offer his client to an exciting twist and make the look more expressive and sensual.
- It is recommended to do a perm before the extension procedure (the interval between treatments is at least 24 hours), if the natural lashes are straight or down.
- *Perfect Silk Lashes™* **Permanent Eyelash Kit** has several advantages, one of which is a yellow regenerative composition. This is a nourishing protein mask for eyelashes. Using this product will eliminate all the effects of chemical exposure on the lashes. The eyelashes become more fluffy and shiny.
- The effect of the perm is noticeable throughout the growth cycle of the eyelashes (from 1,5 to 3 months).





## Perfect Silk Lashes **Lift Eyelashes**

### **PSL1511/LCC**

Curling Cream (White)

Curling Cream (white composition for lift eyelashes).

- Hypoallergenic and gentle white cream, designed to soften and open the scales of the eyelashes without damaging it and preparing for the next fixing composition.
- Safe for eyelid skin.



### **PSL1512/LFC**

Fixing Cream (Purple)

Fixing Cream (purple composition for lift eyelashes).

- Hypoallergenic and gentle purple cream, designed to fix the eyelash curls in accordance with the shape of the silicone pads.
- Safe for eyelid skin.



### **PSL1504/CL**

Cleaning Lotion (Transparent)

Cleaning Lotion (transparent cleansing composition).

- Transparent cleansing composition *Perfect Silk Lashes™*.
- A means for removing silicone pads from the skin of the eyelids and clean the eyelashes of glue.



### **PSL1513/LNKL**

Nourishing Keratin Lotion (Yellow)

Nourishing Keratin Lotion (yellow regenerative composition).

- Yellow regenerative composition *Perfect Silk Lashes™*.
- Protein nourishing mask to restore and add nourishment to the lashes after lift eyelashes.



## Perfect Silk Lashes **Silicone Pads**

**Silicone pads** - latex form for adding curl during the eyelash chemical lift procedure.

- Reusable latex shape with 2 pieces -1 pair; or 3 pairs.
- It has 5 dimensions to achieve curls of various intensity.
- Comfortably fits to the eyelid.
- Hypoallergenic.

### **PSL1616SET**

PSL Silicone Pads SET 3 sizes/pair (S, M, L)



### **PSL1610SET**

PSL Silicone Pads SET 5 sizes/pair (SS, S, M, L, LL)



### **PSL1710SPG**

Glue for Silicone Pads 5g

Glue for Silicone Pads

- Glue allows you to quickly and safely fix the lashes on the silicone pads.
- Resistant to chemical compounds, but is easily removed after the procedure.
- Hypoallergenic.



### **PSL1711SPGF**

Glue for Silicone Pads FAST 5g

Glue for Silicone Pads FAST

- Will appeal more to specialists with experience
- A quick fix will allow you to work faster.
- Resistant to chemical compounds, but is easily removed after the procedure.
- Hypoallergenic.



## Perfect Silk Lashes **Lash Lift Kit**

### **PSL14LLK-I**

*Perfect Silk Lashes™ Lash Lift Kit* - set for a lift eyelashes – more expressive and deep look.

- The process of formation of a curl is simple and can be performed as a separate procedure. Because of this, any specialist has the opportunity to offer his client to an exciting curl of eyelashes and make them look more expressive and sensual.
- *Perfect Silk Lashes™ Plash Lift Kit* has several advantages, one of which is a yellow regenerative composition. This is a nourishing protein mask for eyelashes. Using this product will

eliminate all the effects of chemical exposure on the lashes. The eyelashes become more fluffy and shiny.

- The effect of the lift eyelashes is noticeable throughout the growth cycle of the eyelashes (from 1,5 to 3 months).



## Perfect Silk Lashes **Eyelash and Eyebrow Laminations**

### PSL1531

Lamination Step 1 – Lifting Cream (*white*)

- Extremely gentle but fast at the same time.
- Processing time from 3 minutes for thin hair to a maximum of 7 minutes.
- Convenient dosage with a pump.
- Large amount of product for intensive work - 15ml bottle.



### PSL1532

Lamination Step 2 – Neutralizing Cream (*navy*)

- Has a special formula for interaction with Lifting Cream.
- Fix the shape of the hair.
- Long-lasting achieved result and flawless lamination effect.
- Convenient dosage with a pump.
- Large amount of product for intensive work - 15ml bottle.



### PSL1533

PSL Lamination Step 3 – Keratin Serum, airless tube 1,5 ml

- Restore the structure of the hair.
- Give density and natural shine.
- Rich in active ingredients and extracts.
- Quickly restore the hair after chemical exposure.



## Perfect Silk Lashes **Eyelash and Eyebrow Laminations**

### PSL1901/100

Perfect Silk Lashes LamiCleanser™  
 100 ml Spray

- Specially designed for the Lamination procedure.
- Application through a spray pump, makes this product really convenient to use.
- Cleansing is performed instantly.



### PSL1911/100

Perfect Silk Lashes LamiMousse™  
 100 ml

- Light texture with an optimal pH balance produces a deep cleansing without over-drying the skin and the formation of an oily film.
- Recommended for daily use on the face as a makeup remover, as well as for cleansing eyelashes and eyebrows.
- Suited for damaged skin, relieves inflammation, soothes, heals small wounds, fights with post-acne, scars and skin aging.
- An ideal cleanser after peels and laser procedures.



### PSL1921

Perfect Silk Lashes LamiSoap™  
 for Brows

- Makes eyebrows visually larger in volume and fix the direction of the hairs.
- Lamination effect will be exclusively natural throughout the day.
- Has a strong fixation, but at the same time the hairs retain elasticity.
- There is no feeling of discomfort.



## Perfect Silk Lashes **Lamination Professional Kit**

### PSL0760LKIT

- Based on many years of experience in working with Perming, Lifting and Lamination products.
- High-quality product line that meets the most stringent requirements of professionals in the field of Lamination.

PROFESSIONAL  
KIT FOR PERMING,  
LIFTING &  
LAMINATION



## Perfect Silk Lashes **Accessories**

### **PSL1620**

#### PSL™ Lash Separating & Lifting Tool

High precision in the separation of eyelashes provides a fine tip (angle of 150 °). On the opposite side of the sharp part, you will also find a practical flat tip that will help you press your eyelashes at the beginning of the procedure.

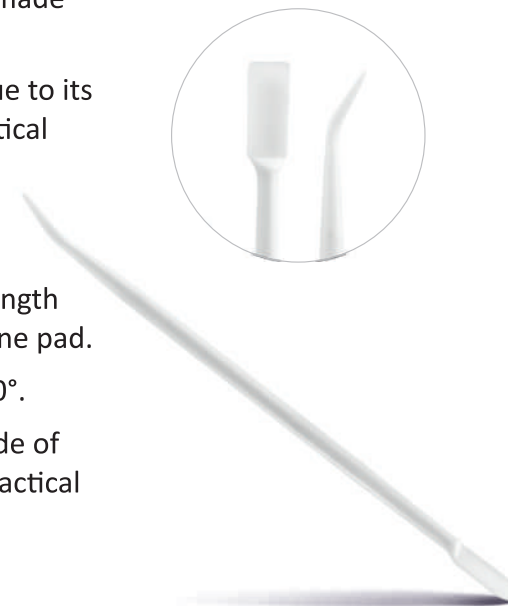
- Made of high quality German stainless steel.
- The tool is lightweight and due to its design is very practical and easy to use.
- Allows you to evenly distribute natural eyelashes of any length on a roller or silicone pad.



### **PSL1622**

#### Eyelashes distributing tool

- 13 cm long tool is made of plastic.
- Lightweight and due to its design is very practical and easy to use.
- Allows to evenly distribute natural eyelashes of any length on a roller or silicone pad.
- The tip angle is 150°.
- On the opposite side of the sharp part a practical flat tip.



## Perfect Silk Lashes **Accessories**

The Y Shape tool from *Perfect Silk Lashes™* is a convenient, durable comb and eyelash styling tool on rollers or silicone pads during the procedures of curling, lifting or laminating eyelashes.

- Non-slip surface for easy handling.
- Micro-comb, located at one end, allows you to properly and quickly distribute the eyelashes on the silicone pads or rollers.
- The instrument can be disinfected effectively and quickly.

### **PSL1621**

PSL™ Y Shape Eyelash Comb (45 x 35)



### **PSL1621P**

PSL™ Y Shape Eyelash Comb (45 x 35) Pink



### **PSL1940**

Glass Jar







PERFECT™  
**SILK**  
LASHES  
BY ANETE STEINA

**PROFESSIONAL  
AND START  
KITS**

## Perfect Silk Lashes **Professional Kit**

### **PSL0708PROKIT**

*Perfect Silk Lashes™ Professional Kit* – kit for the beginner specialist.

- It is recommended to purchase this before starting training.
- Contains all the necessary products, tools and DVD instruction for classical **silk extension** technique **One by One**, **flare extension** and **eyelash perming**.
- Contents of consumables are sufficient to perform dozens of procedures.



## Perfect Silk Lashes **Professional Kit**

### List of all the products included in the *Perfect Silk Lashes™* **Professional Kit:**

- Perfect Silk Lashes 0,12 J-curl 6 mm
- Perfect Silk Lashes 0,12 J-curl 8 mm
- Perfect Silk Lashes 0,12 J-curl 10 mm
- Perfect Silk Lashes 0,12 J-curl 13 mm
- Perfect Silk Lashes 0,12 J-curl 15 mm
- Perfect Silk Lashes 0,12 J-curl blue 10 mm
- Perfect Silk Lashes 0,12 J-curl brown 10 mm
- Perfect Silk Lashes 0,12 J-curl green 10 mm
- Perfect Silk Lashes 0,12 J-curl red 10 mm
- Perfect Silk Lashes 0,12 J-curl violet 10 mm
- Perfect Silk Lashes Eyelash UniCleanser™ 100 ml
- Perfect Silk Lashes LongFlex™ Glue 10 g
- Perfect Silk Lashes Eyelash Glue Remover 10 g
- Perfect Silk Lashes Eyelashes Patch Red
- Air blower for drying eyelashes
- White cotton fabric for work with eyelashes
- Glass for glue
- Scissors
- Tweezers for eyelashes with straight tip

- Tweezers for eyelashes with curved tip
- Tweezers with straight tip Var.2
- Tweezers with curved tip Var.2
- Two-side brush
- Perfect Silk Lashes Microbrush (pack 10 pcs)
- Perfect Silk Lashes Heated Eyelash Curler
- Perfect Silk Lashes Flare Short Black
- Perfect Silk Lashes Flare Medium Black
- Perfect Silk Lashes Flare Short Brown
- Perfect Silk Lashes Single Short Black-Under
- Perfect Silk Lashes Single Short Black
- Perfect Silk Lashes Quick&Strong™ Eyelash Glue 7g Clear
- Perm Lotion (Pink)
- Setting Lotion (Light Blue)
- Nourishing Lotion (Yellow)
- Cleaning Lotion (Transparent)
- Glue for Permanent Rollers 5g
- Perm Rollers Set
- Spirituous Drapes
- Perfect Silk Lashes Curly Black Mascara 10 ml
- Perfect Silk Lashes Extra Fixing Gel 10 ml
- DVD

## Perfect Silk Lashes **Start Kit 2**

### **PSL0707STAKT2**

*Perfect Silk Lashes™ Start Kit 2* – kit for the beginner specialist.

- It is recommended to purchase before starting training.
- Contains all the necessary products, tools and DVD instructions for classical **silk extension** technique **One by One**.
- Contents of consumables are sufficient to perform dozens of procedures.

START KIT NR 2  
FOR SILK EXTENSION  
ONE BY ONE  
METHOD



## Perfect Silk Lashes **Start Kit 2**

List of all the products included in the *Perfect Silk Lashes™*

### **Start Kit 2:**

- Perfect Silk Lashes 0,12 J-curl 7 mm
- Perfect Silk Lashes 0,12 J-curl 9 mm
- Perfect Silk Lashes 0,12 J-curl 11 mm
- Perfect Silk Lashes 0,12 J-curl 13 mm
- Perfect Silk Lashes 0,15 J-curl 10 mm
- Perfect Silk Lashes 0,15 J-curl 12 mm
- Perfect Silk Lashes Eyelash UniCleanser™ 100 ml
- Perfect Silk Lashes LongFlex™ Glue 10 g
- Perfect Silk Lashes Eyelash Glue Remover 10 g
- Tweezers for eyelashes with straight tip
- Tweezers for eyelashes with curved tip
- Perfect Silk Lashes Eyelashes Patch Red
- Air blower for drying eyelashes
- White cotton fabric for work with eyelashes
- Glass for glue
- Perfect Silk Lashes Microbrush (pack 10 pcs)
- Spirituous Drapes
- DVD

## Perfect Silk Lashes **Start Kit 3**

### **PSL0709STAKT3**

*Perfect Silk Lashes™ Start Kit 3* – kit for the beginner specialist.

- It is recommended to purchase this before starting training.
- Contains all the necessary products, tools and DVD instruction for classical **silk extension** technique **One by One**.
- Contents of consumables are sufficient to perform dozens of procedures.

START KIT NR 3  
FOR SILK EXTENSION  
ONE BY ONE  
METHOD





## Perfect Silk Lashes **Start Kit 3**

List of all the products included in the *Perfect Silk Lashes™*  
**Start Kit 3:**

- Perfect Silk Lashes 0,12 J-curl 8 mm
- Perfect Silk Lashes 0,12 J-curl 14 mm
- Perfect Silk Lashes 0,15 J-curl 10 mm
- Perfect Silk Lashes 0,15 J-curl 12 mm
- Perfect Silk Lashes 0,15 C-curl 9 mm
- Perfect Silk Lashes 0,15 C-curl 11 mm
- Perfect Silk Lashes 0,15 C-curl 13 mm
- Perfect Silk Lashes 0,20 C-curl 10 mm
- Perfect Silk Lashes 0,20 C-curl 12 mm
- Perfect Silk Lashes Eyelash UniCleanser™ 100 ml
- Perfect Silk Lashes LongFlex™ Glue 10 g
- Perfect Silk Lashes Eyelash Glue Remover 10 g
- Tweezers with straight tip Black
- Tweezers with curved tip Black
- Perfect Silk Lashes Eyelashes Patch Red
- Air blower for drying eyelashes
- White cotton fabric for work with eyelashes
- Perfect Silk Lashes Silicone Pad
- Glass for glue
- Perfect Silk Lashes Microbrush (pack 10 pcs)
- Spirituous Drapes
- DVD





## Perfect Silk Lashes **Start Kit 5**

List of all the products included in the *Perfect Silk Lashes™*

### **Start Kit 5:**

- PSL Mink Lashes C.20 Black 8/10/12 mm
- PSL Mink Lashes C.20 Black 9/11/13 mm
- PSL Mink Lashes B.25 Black 8/10/12 mm
- PSL Mink Lashes B.25 Black 9/11/13 mm
- Perfect Silk Lashes Eyelash UniCleanser™ 100 ml
- Perfect Silk Lashes LongFlex™ Glue 10 g
- Perfect Silk Lashes Eyelash Glue Remover 10 g
- Tweezers with straight tip Black
- Tweezers with curved tip Black
- Perfect Silk Lashes Eyelashes Patch Red
- Air blower for drying eyelashes
- Perfect Silk Lashes Silicone Pad
- Glass for glue
- Perfect Silk Lashes Microbrush (pack 10 pcs)
- Spirituous Drapes
- DVD

## Perfect Silk Lashes **Start Kit 6**

### **PSL0713STAKT6**

*Perfect Silk Lashes™ Start Kit 6* – kit for the beginner specialist.

- It is recommended to purchase this before starting training.
- Contains all the necessary products, tools and DVD instruction for classical **Mink Line extension** technique **One by One**.
- Contents of consumables are sufficient to perform dozens of procedures.

START KIT NR 6  
BASED ON MINK LINE  
FOR SILK EXTENSION  
ONE BY ONE  
METHOD



## Perfect Silk Lashes **Start Kit 6**

List of all the products included in the *Perfect Silk Lashes™*  
**Start Kit 6**

- PSL Mink Lashes C.15 Black 8/10/12 mm
- PSL Mink Lashes C.15 Black 9/11/13 mm
- PSL Mink Lashes J.20 Black 8/10/12 mm
- PSL Mink Lashes J.20 Black 9/11/13 mm
- PSL Mink Lashes D.20 Black 8/10/12 mm
- PSL Mink Lashes D.20 Black 9/11/13 mm
- PSL Mink Lashes B.25 Black 8/10/12 mm
- PSL Mink Lashes B.25 Black 9/11/13 mm
- Perfect Silk Lashes Eyelash UniCleanser™ 100 ml
- Perfect Silk Lashes LongFlex™ Glue 10 g
- Perfect Silk Lashes Eyelash Glue Remover 10 g
- Perfect Silk Lashes Mink Extension U-Band
- Tweezers with straight tip Black
- Tweezers with curved tip Black
- Perfect Silk Lashes Eyelashes Patch Red
- Air blower for drying eyelashes
- Glass for glue
- Perfect Silk Lashes Microbrush (pack 10 pcs)
- Spirituous Drapes
- DVD

## Perfect Silk Lashes **Start Kit 7**

### **PSL0713STAKT7**

*Perfect Silk Lashes™ Start Kit 7* – kit for the beginner specialist.

- It is recommended to purchase this before starting training.
- Contains all the necessary products, tools and DVD instruction for classical **Mink Line extension technique One by One**.
- Contents of consumables are sufficient to perform dozens of procedures.

START KIT NR 7  
BASED ON MINK LINE  
FOR SILK EXTENSION  
ONE BY ONE  
METHOD



## Perfect Silk Lashes **Start Kit 7**

List of all the products included in the *Perfect Silk Lashes™*

**Start Kit 7:**

- PSL Mink Lashes B.20 Black 8/10/12 mm
- PSL Mink Lashes B.20 Black 9/11/13 mm
- PSL Mink Lashes C.15 Black 8/10/12 mm
- PSL Mink Lashes C.15 Black 9/11/13 mm
- Perfect Silk Lashes Eyelashes Cleaner 150 ml
- Perfect Silk Lashes Eyelash Glue Primer 15ml
- PSL InfinityFlex™ Glue 5 g Rapid Ultra Strong Black
- Perfect Silk Lashes Eyelash Glue Remover 10 g
- Tweezers with straight tip Black
- Tweezers with curved tip Black
- Perfect Silk Lashes Eyelash Patch Red
- Perfect Silk Lashes ProteLift™ Eye Patch (5 pair)
- Air blower for drying eyelashes
- Perfect Silk Lashes Jade Stone 5 cm
- Perfect Silk Lashes Microbrush (pack 10 pcs)
- Mascara brush, black (pack 10 pcs)
- Spirituous Drapes

## Perfect Silk Lashes **Start Kit 8**

### **PSL0713STAKT8**

*Perfect Silk Lashes™ Start Kit 8* – kit for the beginner specialist.

- It is recommended to purchase this before starting training.
- Contains all the necessary products, tools and DVD instruction for classical **Mink Line extension** technique **One by One**.
- Contents of consumables are sufficient to perform dozens of procedures.

START KIT NR 8  
BASED ON MINK LINE  
FOR SILK EXTENSION  
ONE BY ONE  
METHOD



## Perfect Silk Lashes **Start Kit 8**

List of all the products included in the *Perfect Silk Lashes™*

**Start Kit 8:**

- PSL Mink Lashes B.20 Black 8/10/12 mm
- PSL Mink Lashes B.20 Black 9/11/13 mm
- PSL Mink Lashes C.15 Black 8/10/12 mm
- PSL Mink Lashes C.15 Black 9/11/13 mm
- PSL Mink Lashes D.15 Black 8/10/12 mm
- PSL Mink Lashes D.15 Black 9/11/13 mm
- PSL Mink Lashes C.10 Black 8/10/12 mm
- PSL Mink Lashes C.10 Black 9/11/13 mm
- Perfect Silk Lashes Eyelashes Cleaner 150 ml
- Perfect Silk Lashes Eyelash Glue Primer 15ml
- Perfect Silk Lashes Eye Makeup Remover 150 ml
- PSL InfinityFlex™ Glue 5 g Rapid Ultra Strong Black
- Perfect Silk Lashes Eyelash Glue Remover 10 g
- Perfect Silk Lashes Mink Extension U-Band
- Tweezers with straight tip Black
- Tweezers with curved tip Black
- Perfect Silk Lashes Eyelash Patch Red
- Perfect Silk Lashes ProteLift™ Eye Patch (5 pair)
- Air blower for drying eyelashes
- Perfect Silk Lashes Jade Stone 5 cm
- Perfect Silk Lashes Microbrush (pack 10 pcs)
- Mascara brush, black (pack 10 pcs)
- Spirituous Drapes



## Perfect Silk Lashes **Start Kit 9**

### **PSL0713STAKT9**

*Perfect Silk Lashes™ Start Kit 9* – kit for the beginner specialist.

- It is recommended to purchase this before starting training.
- Contains all the necessary products, tools and DVD instruction for classical **Mink Line extension** technique **One by One**.
- Contents of consumables are sufficient to perform dozens of procedures.

START KIT NR 9  
BASED ON MINK LINE  
FOR SILK EXTENSION  
ONE BY ONE  
METHOD





## Perfect Silk Lashes **Start Kit 9**

List of all the products included in the *Perfect Silk Lashes™*  
**Start Kit 9:**

- PSL Mink Lashes C.20 Black 8/10/12 mm
- PSL Mink Lashes D.20 Black 8/10/12 mm
- PSL Mink Lashes C.15 Black 9/11/13 mm
- PSL Mink Lashes D.15 Black 9/11/13 mm
- Perfect Silk Lashes Eyelashes Cleaner 150 ml
- Perfect Silk Lashes Eye Makeup Remover 150 ml
- PSL LongFlex™ Glue 5 g Super Strong Black
- Perfect Silk Lashes Eyelash Glue Remover 10 g
- Tweezers with straight tip Black
- Tweezers with curved tip Black
- Perfect Silk Lashes ProteLift™ Eye Patch (pack 10 pair)
- Air blower for drying eyelashes
- Perfect Silk Lashes Jade Stone 5 cm
- Glue sticker, 10 sheets in a bag
- Mascara brush, black (pack 10 pcs)
- Perfect Silk Lashes Microbrush (pack 100 pcs)
- Spirituous Drapes

## Perfect Silk Lashes **Volume Start Kit**

### **PSL0740VKIT**

*Perfect Silk Lashes™* **Volume Start Kit** – kit for the beginner specialist.

- It is recommended to purchase this before starting training.
- Contains all the necessary products and tools for **Volume** extension technique.
- Contents of consumables are sufficient to perform dozens of procedures



START KIT  
FOR VOLUME  
EXTENSION  
METHOD

## Perfect Silk Lashes **Volume Start Kit**

List of all the products included in the *Perfect Silk Lashes™*  
**Volume Start Kit:**

- PSL Mink Lashes C.07 Black 8/10/12 mm
- PSL Mink Lashes C.07 Black 9/11/13 mm
- PSL Mink Lashes D.07 Black 8/10/12 mm
- PSL Mink Lashes D.07 Black 9/11/13 mm
- Perfect Silk Lashes Eyelash UniCleanser™ 100 ml
- Perfect Silk Lashes InfinityFlex™ Glue 5 g
- Perfect Silk Lashes Eyelash Glue Remover 10 g
- PSL Volume Eyelash Tweezers Extra Angled
- PSL Volume Eyelash Tweezers Chisel Type
- Perfect Silk Lashes Eyelashes Patch Red
- Perfect Silk Lashes 3D Ring disc
- Perfect Silk Lashes Mink Extension U-Band
- Air blower for drying eyelashes
- Glass for glue
- Perfect Silk Lashes Microbrush (pack 10 pcs)
- Spirituous Drapes
- DVD

## Perfect Silk Lashes **Eyebrow Start Kit**

### **PSL0750EKIT**

*Perfect Silk Lashes™* **Eyebrow Start Kit** – kit for the beginner specialist.

- It is recommended to purchase this before starting training.
- Contains all the necessary products and tools for **Eyebrow extension** technique.
- Contents of consumables are sufficient to perform dozens of procedures.



## Perfect Silk Lashes **Eyebrow Start Kit**

List of all the products included in the *Perfect Silk Lashes™*  
**Eyebrow Start Kit:**

- PSL Eyebrow 0.10 Black 5/6/7 mm
- PSL Eyebrow 0.10 Black 6/7/8 mm
- PSL Eyebrow 0.10 Black Brown 5/6/7 mm
- PSL Eyebrow 0.10 Black Brown 6/7/8 mm
- PSL Eyebrow 0.10 Dark Brown 5/6/7 mm
- PSL Eyebrow 0.10 Dark Brown 6/7/8 mm
- Perfect Silk Lashes Eyelash UniCleanser™ 100 ml
- Perfect Silk Lashes StylFlex™ Glue 10 g
- Perfect Silk Lashes Eyebrow Glue Remover 10 g
- Tweezers with straight tip Black
- Tweezers with curved tip Black
- Perfect Silk Lashes Eyelash curler
- Air blower for drying eyelashes
- Glass for glue
- Perfect Silk Lashes Microbrush (pack 10 pcs)
- Spirituous Drapes
- DVD

## Perfect Silk Lashes **Lamination Professional Kit**

### PSL0760LKIT

- Based on many years of experience in working with Perming, Lifting and Lamination products.
- High-quality product line that meets the most stringent requirements of professionals in the field of Lamination.

PROFESSIONAL  
KIT FOR PERMING,  
LIFTING &  
LAMINATION



## Perfect Silk Lashes **Lamination Professional Kit**

List of all the products included in the *Perfect Silk Lashes™*

### **Lamination Professional Kit:**

- PSL LamiCleanser™ 100 ml Spray
- PSL LamiMousse™ 100 ml
- PSL LamiSoap™ for Brows
- PSL Lifting Cream, bottle with pump 15 ml (white)
- PSL Neutralizing Cream, bottle with pump 15 ml (navy)
- PSL Keratin Serum, airless tube 1,5 ml
- RefectoCil Tint Black 1.0
- RefectoCil Tint Natural Brown 3.0
- Refectocil Oxidant Creme 3%, 100ml
- PSL Silicone Pads SET 5 sizes/pair (SS, S, M, L, LL)
- PSL Silicone Pads SET 3 sizes/pair (S, M, L)
- Glue for Silicone Pads 5 g
- PSL ProteLift™ Eye Patch, Banana Style
- PSL Plastic sticker, for perming lash use
- Glass Jar
- PSL Y Shape Eyelash Comb (45 x 35) Pink
- Perfect Silk Lashes Glue Ring (big with partition)
- Perfect Silk Lashes Microbrush (pack 10 pcs)
- Mascara brush, black (pack 10 pcs)